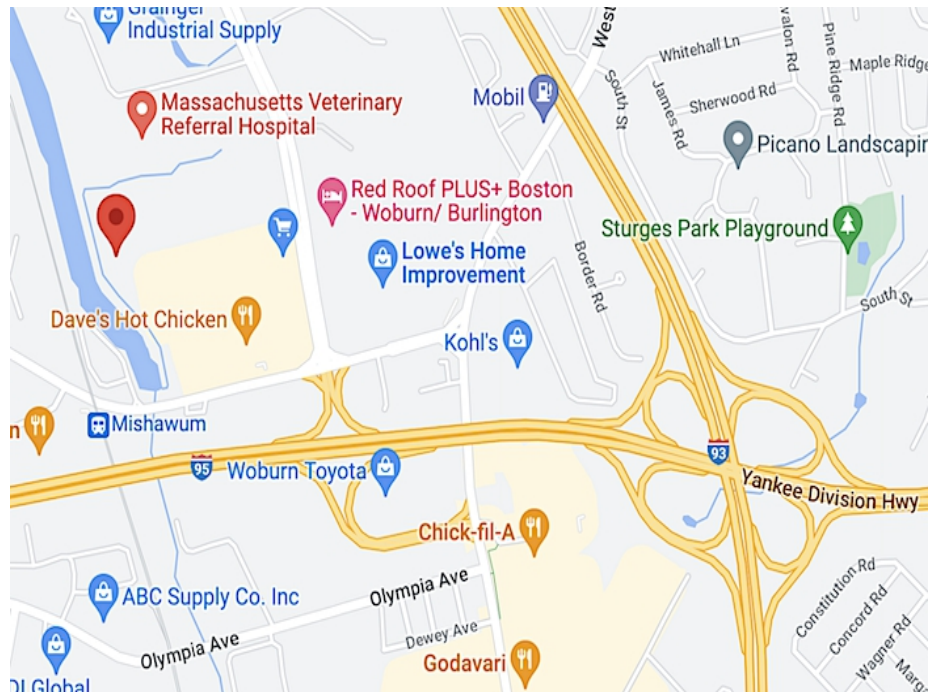


10 Commerce Way, Woburn, MA



FIRST FLOOR 6,200 +/-SF OFFICE FOR SUB-LEASE

- 6,200 +/- sf Office
- First floor with direct exterior entry
- 6 Private Offices
- 2 Conference Rooms
- Break Room with Kitchenette
- Sub-lease term 1-2 years, through 6/30/2025
- Conveniently located 0.4 mile to Route 95/128 and about 1.1 miles to the Route 95/93 interchange. Located across from the shops at Woburn Village.
- \$8,500 per month gross
(Base rent includes utilities. Tenant pays interior cleaning, phone, internet).



Edward Carbone, CCIM

781.935.5444 (o)

978.930.1579 (c)

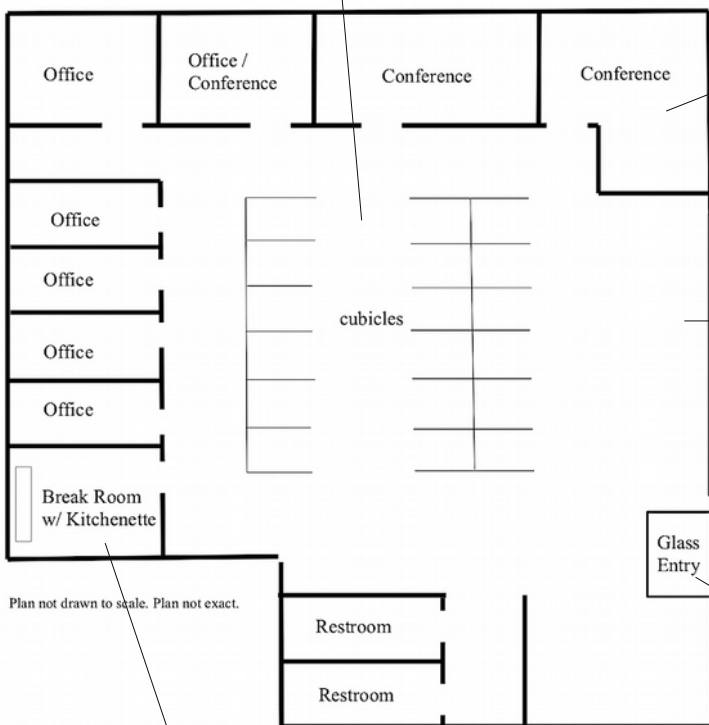
Edward@CarboneRE.com

CarboneRE.com

CARBONE Commercial Real Estate, Inc.

All information furnished is from sources deemed reliable, but no warranty or representation is made as to the accuracy thereof, and the same is presented subject to errors, omissions, change of price, rental or other conditions, prior sale or lease, or withdrawal without notice. Copyright © 2023 Carbone Commercial Real Estate, Inc., agent of the Owner/Lessor.

10 COMMERCE WAY, WOBURN, MA



781.935.5444

CarboneRE.com

CARBONE Commercial Real Estate, Inc.