

# 157 Bedford Street, Burlington, MA



## RETAIL SPACE FOR LEASE – END-CAP AVAILABLE

UNIT A1: 1,576 +/- sf

UNIT A2: 1,440 +/- sf

UNIT C: 1,208 +/- sf

- Two contiguous units for lease (Units A1 & A2)
- Unit A1 is the end-cap unit with full length visibility along Bedford Street / Route 62
- Exterior retail sign positioning
- On-site, shared parking lot
- Zoned: B-G (Business General)
- Located on Route 62, 0.5 miles to Route 3
- 1.1 miles to the shops at Third Avenue
- 1.8 miles to the Burlington Mall & Route 95/128



Edward Carbone, CCIM

781.935.5444 (o)

978.930.1579 (c)

Edward@CarboneRE.com

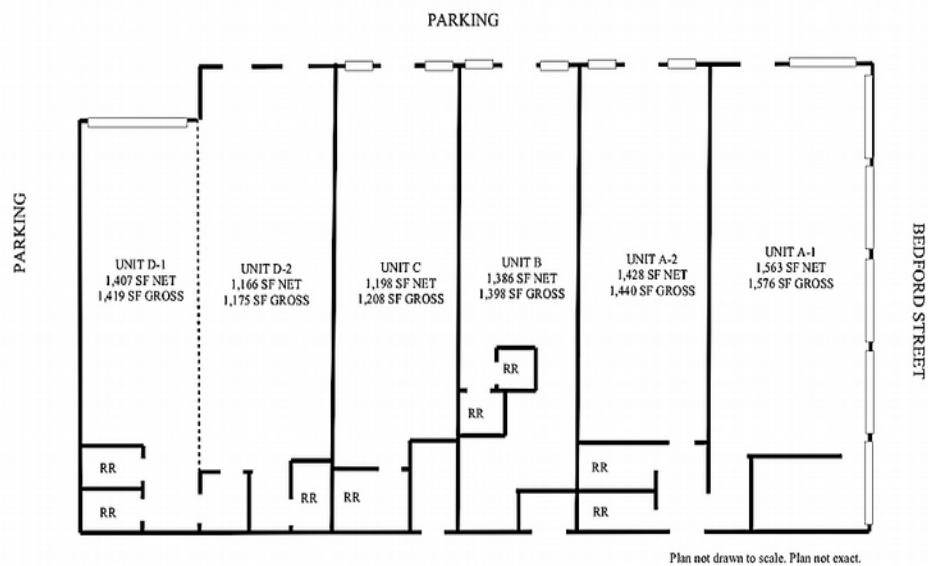
CarboneRE.com

## CARBONE Commercial Real Estate, Inc.

All information furnished is from sources deemed reliable, but no warranty or representation is made as to the accuracy thereof, and the same is presented subject to errors, omissions, change of price, rental or other conditions, prior sale or lease, or withdrawal without notice. Copyright © 2021 Carbone Commercial Real Estate, Inc., agent of the Owner/Lessor.



**157 Bedford Street, Burlington, MA**



781.935.5444 (o)  
CarboneRE.com

**CARBONE Commercial Real Estate, Inc.**