

1 Mountain Road, Burlington, MA



OFFICE FOR LEASE

- 900 +/- sf Office
- 2-Room: 1 private office + large open space
- Front and rear-facing windows
- 2nd Floor, walk-up
- Shared on-site, daytime parking lot
- Common restrooms
- Available now
- Located at the corner of Winn Street & Mountain Road; near the Woburn/Burlington town line and approximately 0.4 miles to Route 128/95
- \$1,500 per month including utilities



Edward Carbone, CCIM

781.935.5444 (o)

978.930.1579 (c)

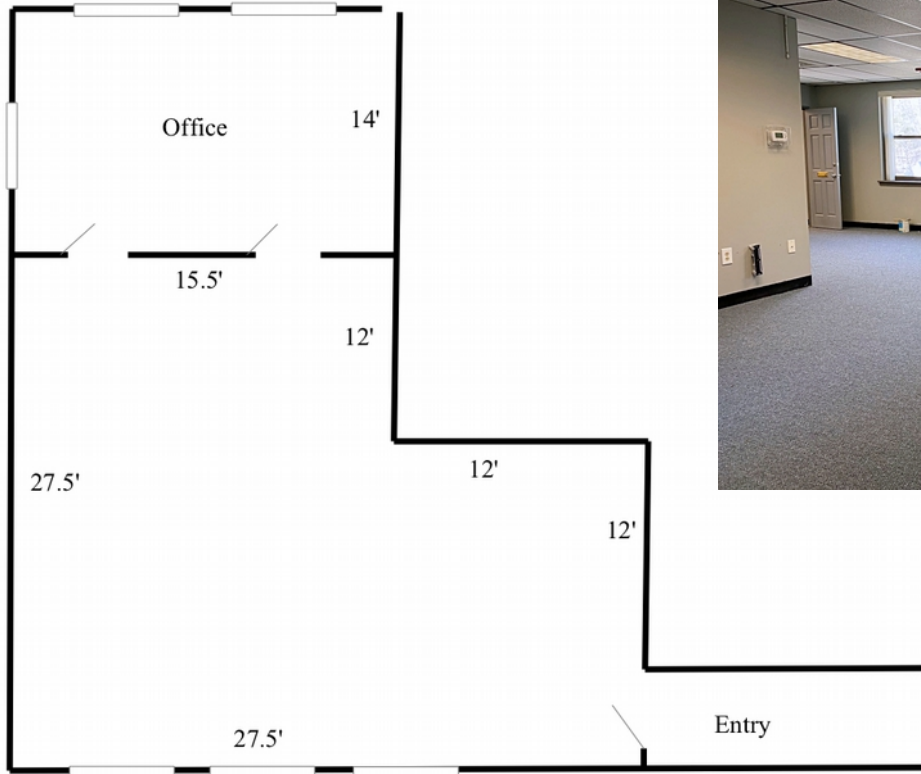
Edward@CarboneRE.com

CarboneRE.com

CARBONE Commercial Real Estate, Inc.

All information furnished is from sources deemed reliable, but no warranty or representation is made as to the accuracy thereof, and the same is presented subject to errors, omissions, change of price, rental or other conditions, prior sale or lease, or withdrawal without notice.
Copyright © 2023 Carbone Commercial Real Estate, Inc., agent of the Owner/Lessor.

1 Mountain Road, Burlington, MA



Plan not drawn to scale. Plan not exact.



781.935.5444
CarboneRE.com

CARBONE Commercial Real Estate, Inc.