

# WOBURN, MA FOR LEASE

8,283 ± sq. ft. Industrial & Office Space



## 1 Arrow Drive, Woburn, MA

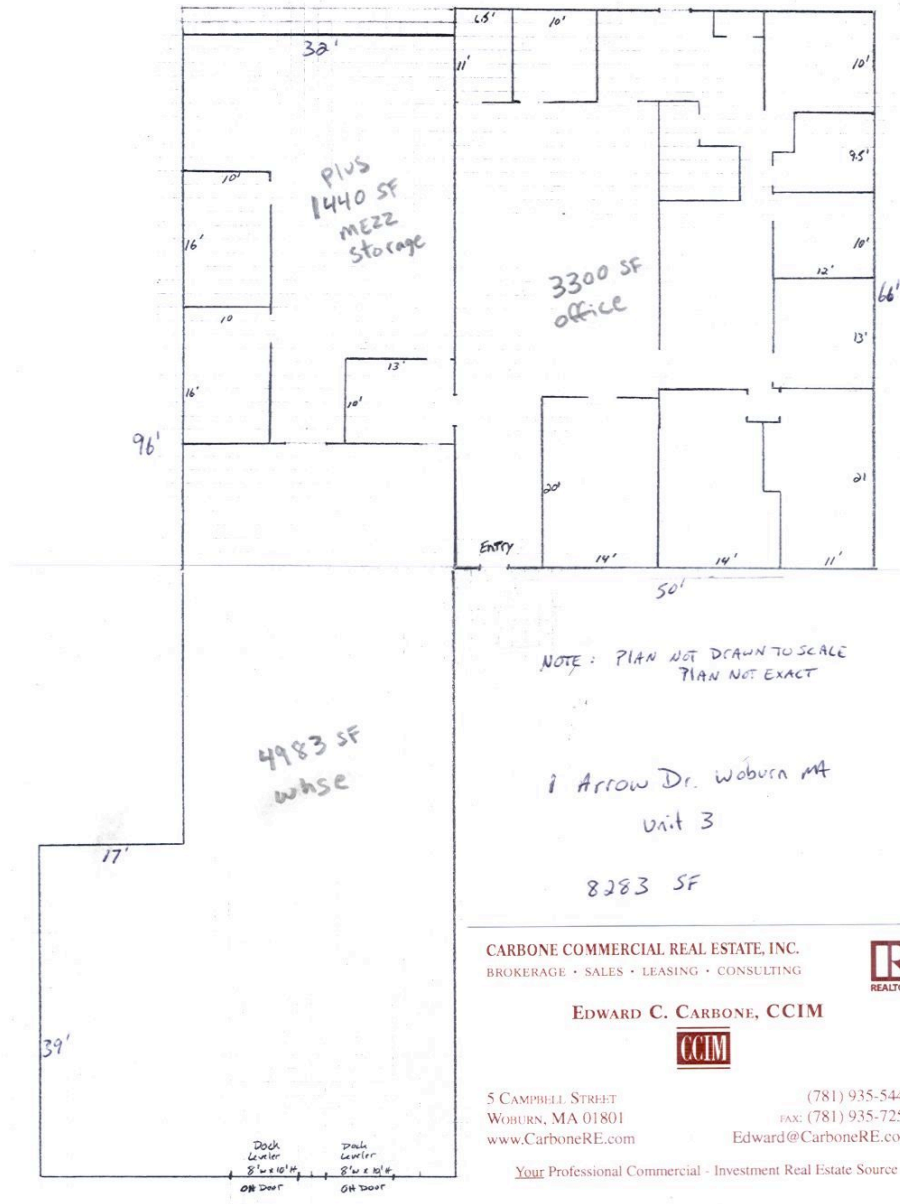
Carbone Commercial Real Estate, Inc. is please to offer 8283 ± square feet of industrial and office space at 1 Arrow Drive, Woburn, MA 01801 available for lease.

- Size: 8,283± square feet
- Office Space: 3,300± sf
- Warehouse Space 4,983± sf
- Restrooms: Two, Common
- A/C 100%
- Water & Sewer: Municipal
- Construction Masonry
- Zoning: IP (Industrial Park)
- Built: 1989
- Loading Dock: 2 Loading Docks
- Electric Power: Heavy, 3 Phase Power
- Ceiling Height: 20± feet high
- Lease Term: Negotiable
- Lease Rate: \$10.00/sf gross plus utilities

**CARBONE Commercial Real Estate, Inc. 781-935-5444**  
**[www.CarboneRE.com](http://www.CarboneRE.com)**

All information furnished is from sources deemed reliable, but no warranty or representation is made as to the accuracy thereof, and the same is presented subject to errors, omissions, change of price, rental or other conditions, prior sale or lease, or withdrawal without notice. Carbone Commercial Real Estate, Inc. is the agent of the Lessor. July, 2009.

1 Arrow Drive, Woburn, MA  
8283 square feet, floor plan



CARBONE COMMERCIAL REAL ESTATE, INC.  
BROKERAGE • SALES • LEASING • CONSULTING



EDWARD C. CARBONE, CCIM



5 CAMPBELL STREET  
WOHURN, MA 01801  
www.CarboneRE.com

(781) 935-5444  
FAX: (781) 935-7251  
Edward@CarboneRE.com

Your Professional Commercial - Investment Real Estate Source