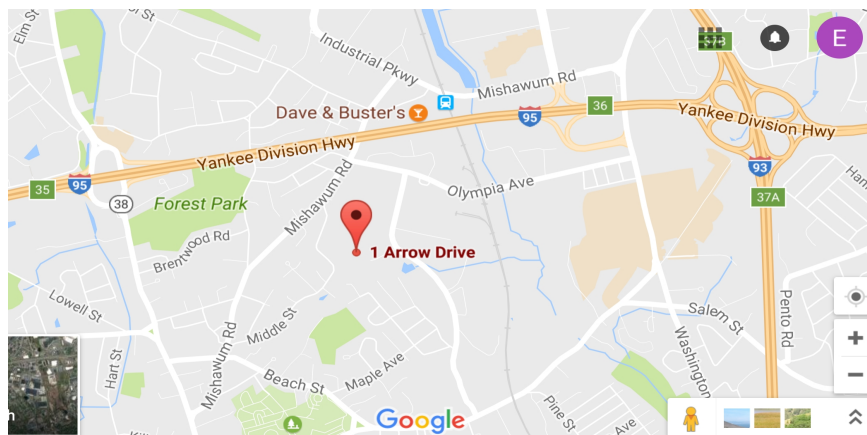


# 1 Arrow Drive, Woburn, MA



## Office Space For Lease

- Unit Size: 3,300 ± sq. ft.
- Type of Space: Office Space
- Floor: First Floor
- Unit Description: 12 room suite  
6 private offices, conference room, 3 storage room
- Building/Lot/Age: 40,044± sq. ft. on 3.47± Acre Lot, Built 1989
- Zoning: IP (Industrial Park)
- Restrooms: Common restrooms
- Parking: 15 ± on-site shared parking spaces available
- Available: Immediately
- Lease Rate: \$12.00 per SF plus utilities



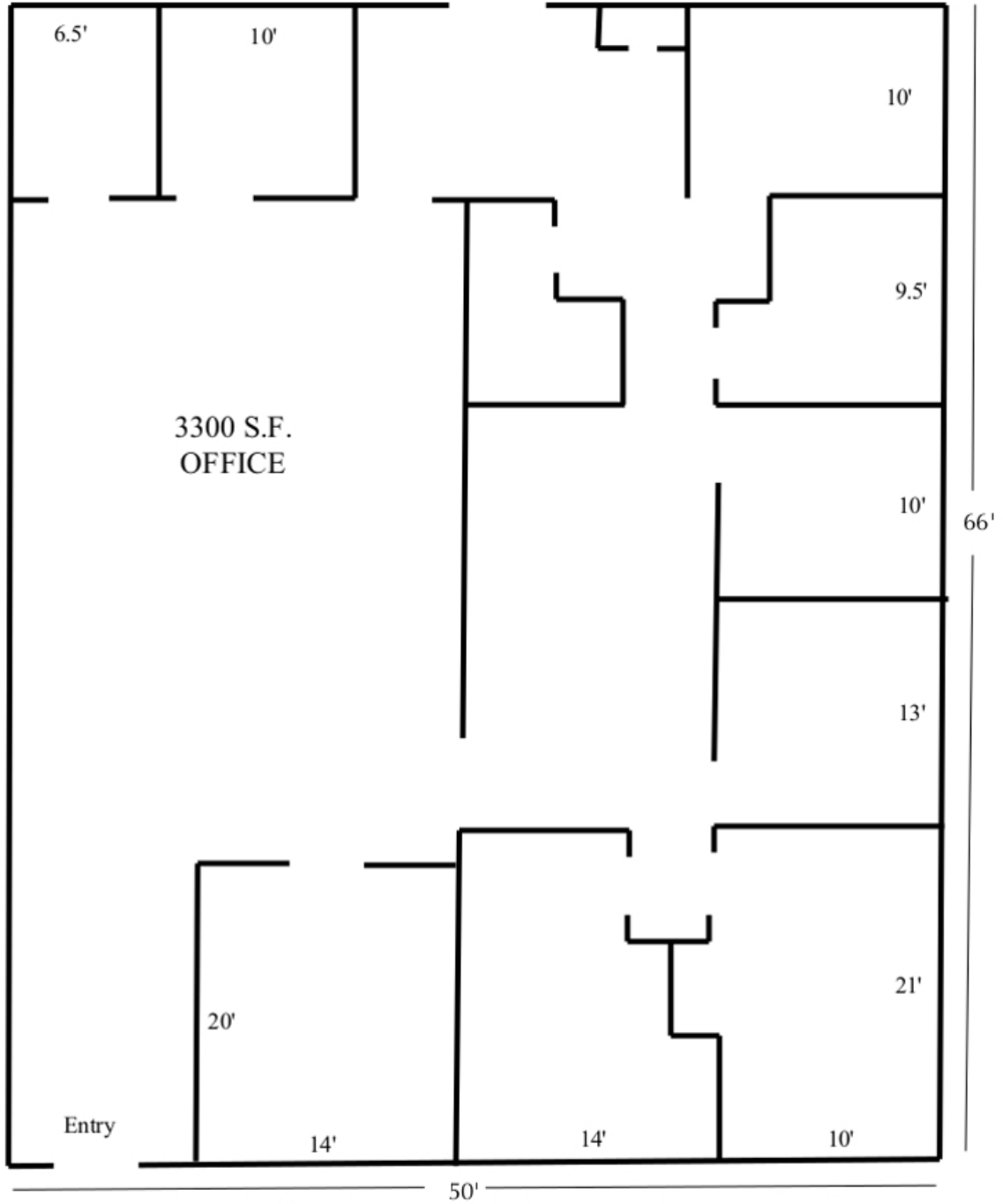
**Contact: Edward Carbone 781-935-5444 [Edward@CarboneRE.com](mailto:Edward@CarboneRE.com)**

**CARBONE Commercial Real Estate, Inc.**

Your Professional Commercial-Investment Real Estate Source

All information furnished is from sources deemed reliable, but no warranty or representation is made as to the accuracy thereof, and the same is presented subject to errors, omissions, change of price, rental or other conditions, prior sale or lease, or withdrawal without notice. Carbone Commercial Real Estate, Inc. is the agent of the Lessor. Copyright 2018.

1 ARROW DRIVE, WOBURN, MA



[Plan not drawn to scale. Plan not exact.]