

# 215 Lexington Street, Woburn, MA



## FIRST FLOOR OFFICE SPACE FOR LEASE

- 3,300 +/- sf
- First floor, handicap accessible office
- Access to common loading dock
- 3 private office + conference room
- Open bull-pen area
- Break room with kitchenette
- Pylon street sign on site
- Common on-site, daytime parking
- \$20.00 per sf plus utilities



Edward Carbone, CCIM

781.935.5444 (o)

978.930.1579 (c)

Edward@CarboneRE.com

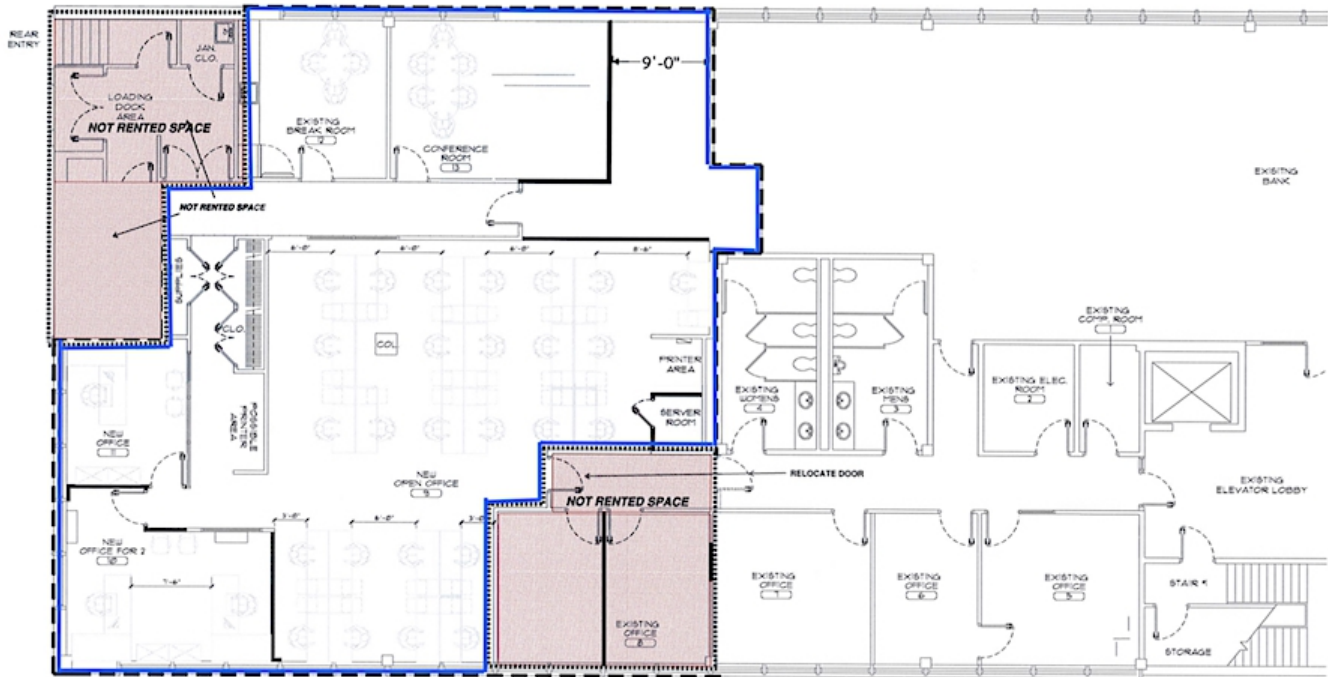
CarboneRE.com

## CARBONE Commercial Real Estate, Inc.

All information furnished is from sources deemed reliable, but no warranty or representation is made as to the accuracy thereof, and the same is presented subject to errors, omissions, change of price, rental or other conditions, prior sale or lease, or withdrawal without notice.

Copyright © 2021 Carbone Commercial Real Estate, Inc., agent of the Owner/Lessor.

# 215 LEXINGTON STREET, WOBURN, MA



Available office space

Plan may not be exact.



## 215 LEXINGTON STREET, WOBURN, MA



781.935.5444 (o)  
CarboneRE.com

CARBONE Commercial Real Estate, Inc.