

215 Lexington Street, Woburn, MA



3,585 sq. ft. Office Space For Lease sub-dividable to 2,287sf and 1,030sf

- Total Unit Size: 3,585± rsf
- Floor: 1st Floor, handicap access
- Lease Term: 3 to 5 years
- Restrooms: 2 common restrooms
- Loading Dock: 1 Loading Dock
- Zoning: B-H Business Highway
- Building: 16,700± sq. ft. on 1.11 acre lot, Built 1994
- Parking: 40 ± on-site common parking spaces
- Lease Rate: \$18.50/rsf plus utilities

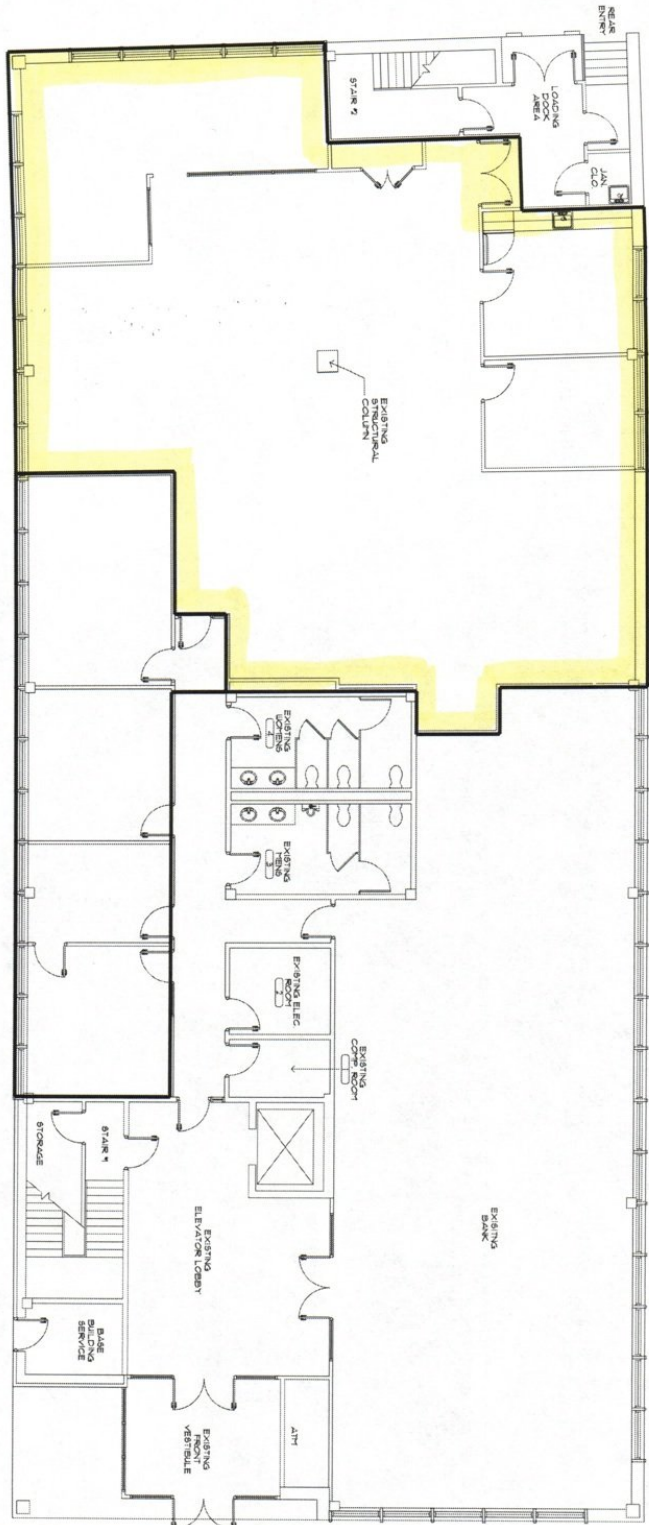
Lease rate includes the base year real estate taxes, building insurance, exterior maintenance, snow plowing, landscaping, common area/restroom cleaning. Utilities will be billed at \$2.50/rsf/yr. Tenant responsible for its own telephone and janitorial. The rent for the sub-divided 2287rsf and 1030 rsf units are quoted as \$19.50/rsf +utilities.

Contact: Edward Carbone 781-935-5444 Edward@CarboneRE.com

CARBONE Commercial Real Estate, Inc.

Your Professional Commercial-Investment Real Estate Source

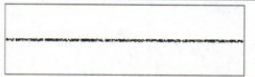
All information furnished is from sources deemed reliable, but no warranty or representation is made as to the accuracy thereof, and the same is presented subject to errors, omissions, change of price, rental or other conditions, prior sale or lease, or withdrawal without notice. Carbone Commercial Real Estate, Inc. is the agent of the Lessor.



1 EXISTING CONDITIONS
1ST FLOOR PLAN
SCALE 3/8" = 1'-0"

EX	DATE: 02/20/2018
	PROJECT: SEASIDER
	CLIENT: SEASIDER
	DESIGNER: SEASIDER

SEASIDER HEADQUARTERS
1ST FLOOR
215 LEXINGTON STREET
LOBURN, MA 01821



DISSEMINATED FOR USE BY ANY OTHER
PERSON OR PROJECT AND ARE NOT TO BE
REPRODUCED OR COPIED WITHOUT THE
WRITTEN CONSENT OF CCS DESIGN
PROJECT

DESIGNER:
CANDIDO C. SOARES
1046 PLEASANT ST
LOBURN, MASS 01821
MOBILE: 305.804.2690
ccsdesigner@aol.com