

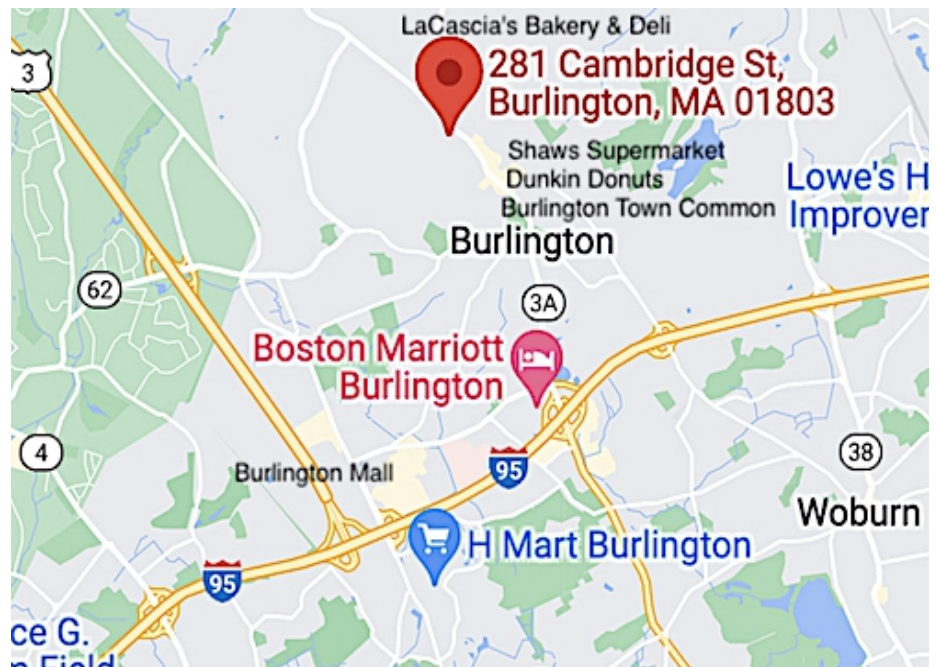
# 281 Cambridge Street, Burlington, MA



This medical office building on Route 3A in Burlington has ample on-site parking, handicap access, and an elevator. Available for lease:

## OFFICE FOR LEASE

- 540 +/- sf
- Reception
- 1 Office + open work area
- Kitchenette with sink & cabinetry
- Sink with eye-wash
- Restroom in unit
- Common / shared break room in hall
- \$1,250 per month plus utilities



Edward Carbone, CCIM

781.935.5444 (o)

978.930.1579 (c)

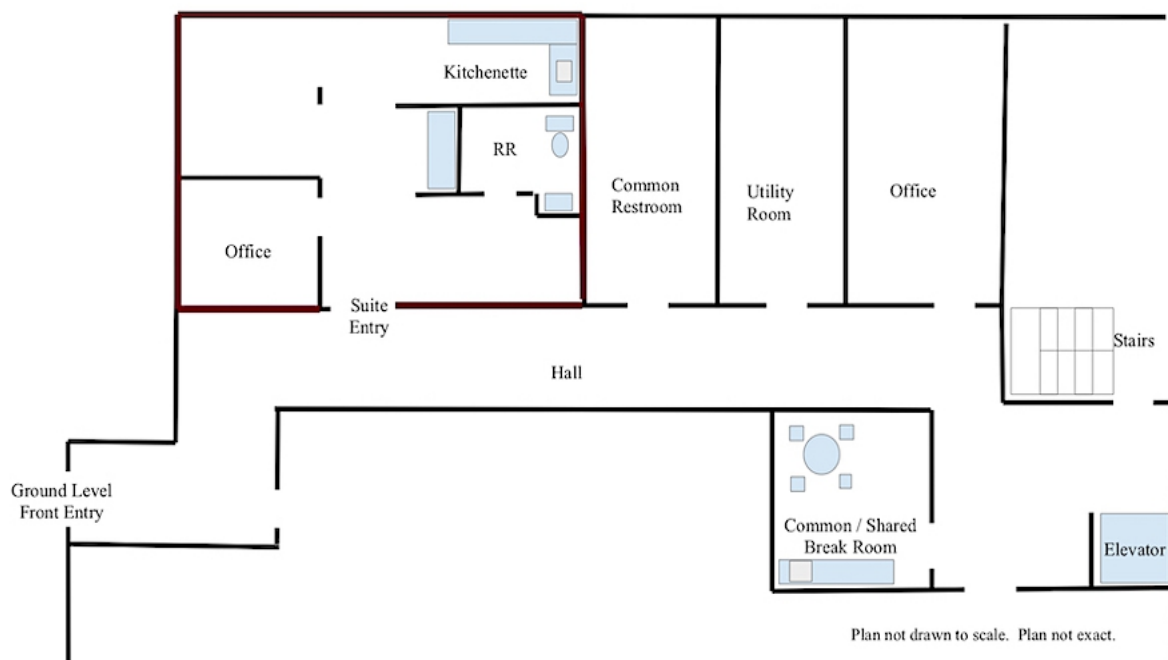
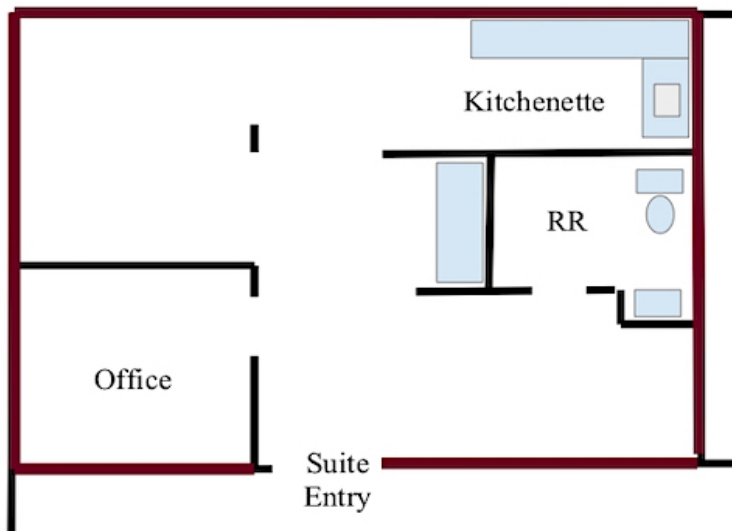
Edward@CarboneRE.com

CarboneRE.com

## CARBONE Commercial Real Estate, Inc.

All information furnished is from sources deemed reliable, but no warranty or representation is made as to the accuracy thereof, and the same is presented subject to errors, omissions, change of price, rental or other conditions, prior sale or lease, or withdrawal without notice. Copyright © 2022 Carbone Commercial Real Estate, Inc., agent of the Owner/Lessor.

## 281 CAMBRIDGE STREET, BURLINGTON, MA





## 281 CAMBRIDGE STREET, BURLINGTON, MA



781.935.5444  
CarboneRE.com

CARBONE Commercial Real Estate, Inc.