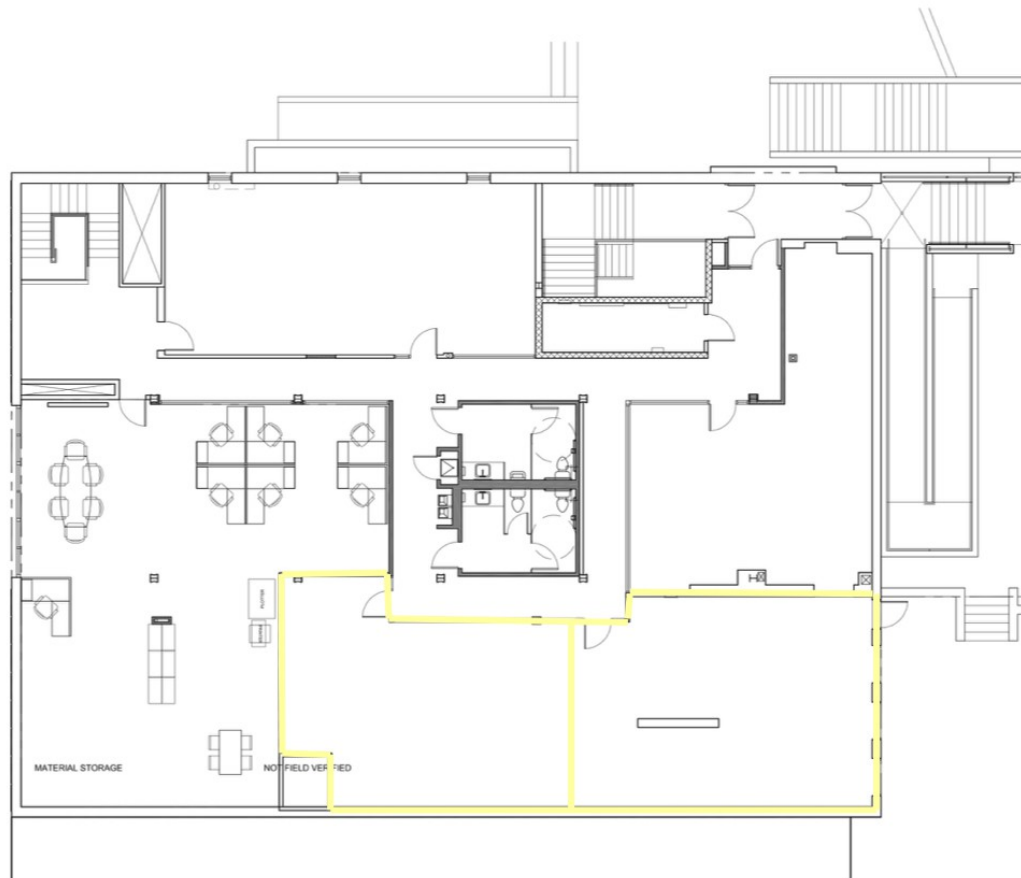


355 Main Street, Woburn, MA



db2/ARCHitecture
660 MAIN STREET
WOBURN, MA 01801
Tel: 781.205.2380

ADDRESS:
355 MAIN STREET
WOBURN, MA

TITLE:
SECOND FLOOR PLAN -
LEASE AREA

PROJ.#:	0	DWG.#:	
DATE:	11/21/18		
SCALE:	1/8" = 1'-0"		
DRAWN BY:	0014		

A-1

CARBONE Commercial Real Estate, Inc.

Your Professional Commercial-Investment Real Estate Source

Contact: **Edward Carbone 781-935-5444** Edward@CarboneRE.com www.CarboneRE.com

All information furnished is from sources deemed reliable, but no warranty or representation is made as to the accuracy thereof, and the same is presented subject to errors, omissions, change of price, rental or other conditions, prior sale or lease, or withdrawal without notice. Copyright 2018 © Carbone Commercial Real Estate, Inc., agent of the Owner/Seller.