

CARBONE COMMERCIAL REAL ESTATE, INC.

11,096 sq. ft.
INDUSTRIAL BUILDING
FOR SALE
5 HALLBERG PARK
N. READING, MA

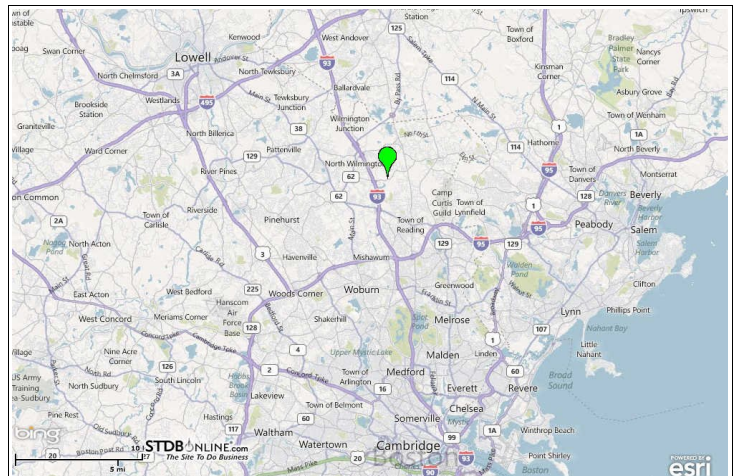
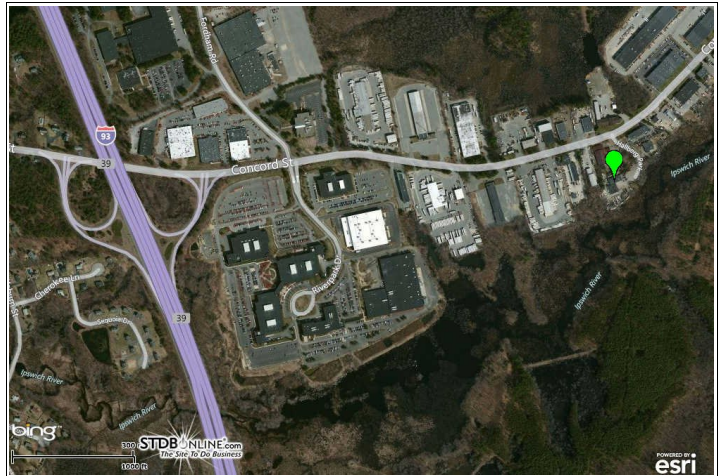
Building Size: 11,096 ± square feet
Zoning: IO (industrial office)
Lot 4 = 41,153 ± square feet plus
Lot 5 = 4.347 ± acres
RE Taxes (fy2012): \$13,255.38
Loading: 5 Drive-In Garage Doors
Year Built: 1970 per town
Height: 16' under the bar joists
Electrical: one meter
Heat: propane and electric
Approx. 15% office and 4 restrooms
Masonry building

Direction: 16 Miles 21 Minutes
From Boston Take Interstate 93
North to Exit #39 at the end of ramp
Turn Right on Concord Road
Take Second Right on Hallberg Pk

Sale Price: \$1,300,000

Exclusive Agent:

Edward Carbone, CCIM
Carbone Commercial Real Estate, Inc.
5 Stone Edge Lane
Woburn, MA 01801
Tel: 781 935 5444
Cell: 978 930 1579
Email: Edward@CarboneRE.com
www.CarboneRE.com



All information furnished is from sources deemed reliable, but no warranty or representation is made as to the accuracy thereof, and the same is presented subject to errors, omissions, change of price, rental or other conditions, prior sale or lease, or withdrawal without notice. Carbone Commercial Real Estate, Inc. is the agent of the Seller.