

157 Bedford Street, Burlington, MA



END-CAP RETAIL SPACE - FOR LEASE

- **Unit A1:** 1,576 +/-sf
- End-cap unit with full length visibility along Route 62/Bedford Street
- Exterior retail sign positioning
- Common restrooms shared with unit A2
- On-site, shared parking lot
- Zoned: B-G (Business General)
- Located on Route 62, 0.5 miles to Route 3;
- 1.1 miles to the shops at Third Avenue
- 1.8 miles to the Burlington Mall & Route 95/128
- \$30.00 per sf nnn



Edward Carbone, CCIM

781.935.5444 (o)

978.930.1579 (c)

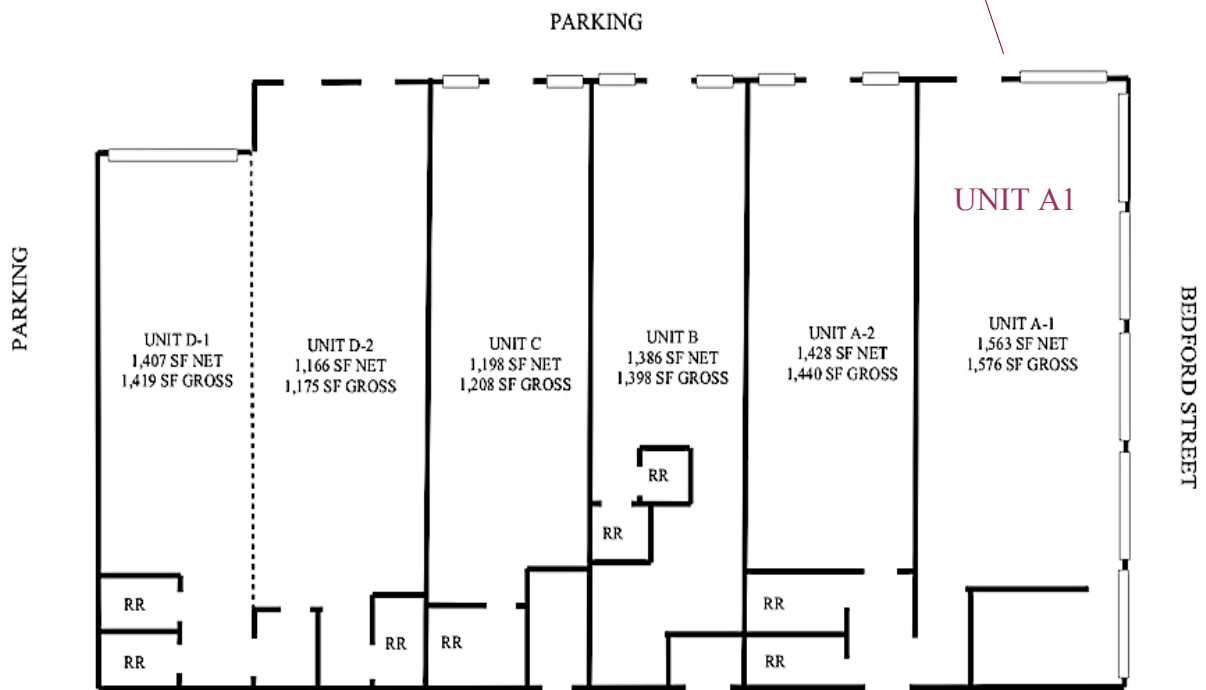
Edward@CarboneRE.com

CarboneRE.com

CARBONE Commercial Real Estate, Inc.

All information furnished is from sources deemed reliable, but no warranty or representation is made as to the accuracy thereof, and the same is presented subject to errors, omissions, change of price, rental or other conditions, prior sale or lease, or withdrawal without notice.
Copyright © 2025 Carbone Commercial Real Estate, Inc., agent of the Owner/Lessor.

157 Bedford Street, Burlington, MA



Plan not drawn to scale. Plan not exact.