

165 Bedford Street, Burlington, MA



SECOND FLOOR OFFICE SPACE

- Flexible size options available approximately 500 to 2,500 sf.
- On-site parking (front & rear)
- Private offices & open space
- Open interior staircase
- Private lavatory in each unit
- Exterior sign placement
- 0.5 miles to Route 3
- 1.8 Miles to the Burlington Mall & Route 95/128
- \$15.00 per sf nnn



CARBONE Commercial Real Estate, Inc.

Contact: Edward Carbone @ 781-935-5444

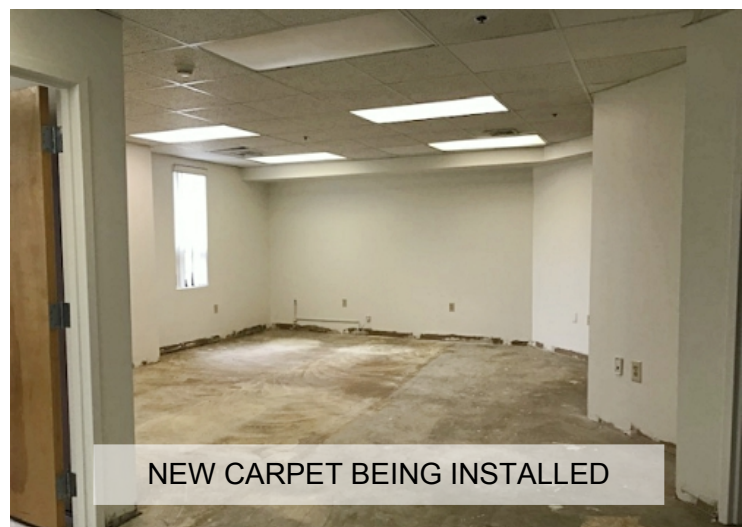
Edward@CarboneRE.com www.CarboneRE.com

Connect for updates:



All information furnished is from sources deemed reliable, but no warranty or representation is made as to the accuracy thereof, and the same is presented subject to errors, omissions, change of price, rental or other conditions, prior sale or lease, or withdrawal without notice. Copyright 2018 © Carbone Commercial Real Estate, Inc., agent of the Owner/Lessor.

165 Bedford Street, Burlington, MA



CARBONE Commercial Real Estate, Inc.

Your Professional Commercial-Investment Real Estate Source

Contact: **Edward Carbone** 781-935-5444 Edward@CarboneRE.com www.CarboneRE.com

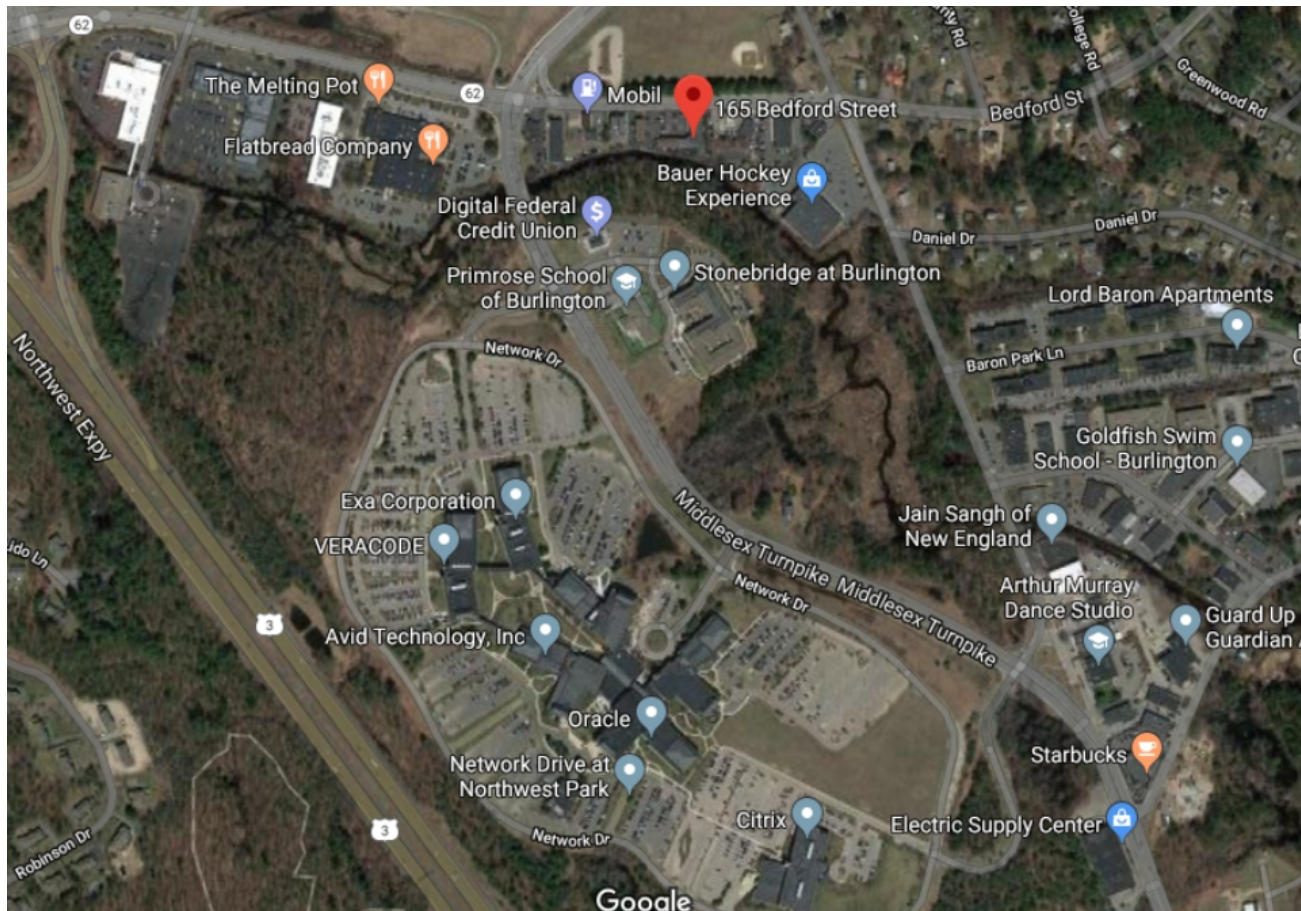
165 Bedford Street, Burlington, MA

AREA AMENITIES

Citizens Bank
Digital Federal Credit Union
Flatbread Company
The Melting Post
Panera Bread
Primrose School
Starbucks
Dunkin Donuts
Mobil Gas
Citgo

AREA BUSINESSES

Burlington Motors
Network Drive Business Park
Oracle
Exa Corporation
Veracode
Citrix
Avid Technology
NetBrain Technologies
Mitre
1.3 Miles to Wegmans
1.8 Miles to the Burlington Mall



CARBONE Commercial Real Estate, Inc.

Your Professional Commercial-Investment Real Estate Source

Contact: Edward Carbone 781-935-5444 Edward@CarboneRE.com www.CarboneRE.com