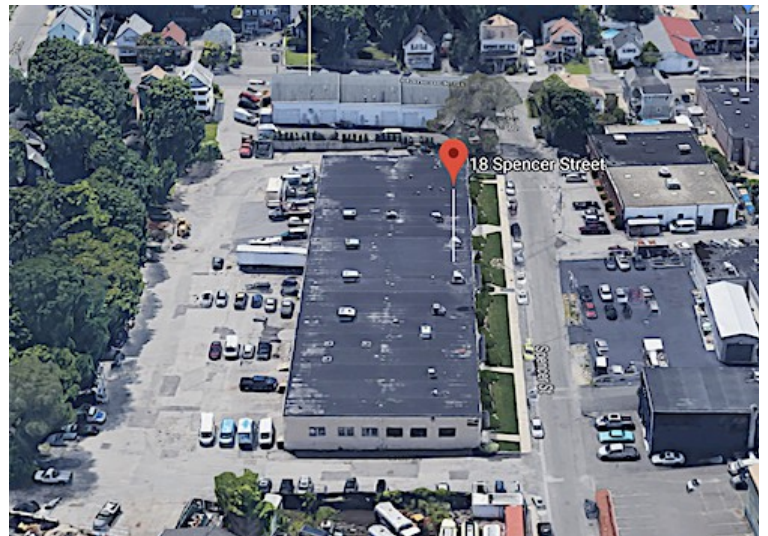


18 Spencer Street, Stoneham, MA



5,000 +/- SF INDUSTRIAL WAREHOUSE SPACE WITH OFFICE

- 4,000 +/- sf first floor space:
 - 2,800 +/- sf warehouse (1st)
 - 1,200 +/- sf office (1st)
- 1,000 +/- sf mezzanine + 600 +/- storage (2nd)
- 15' clear
- 12' overhead door; trailer truck dock
- Power: 400 amp 480v
- Separate utilities: electric, gas, water
- On-site parking
- On-site area to place a dumpster
- \$6,200 per month plus utilities



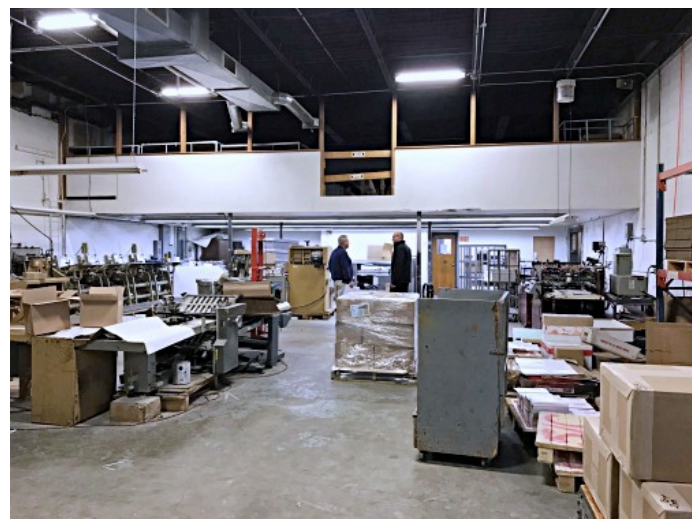
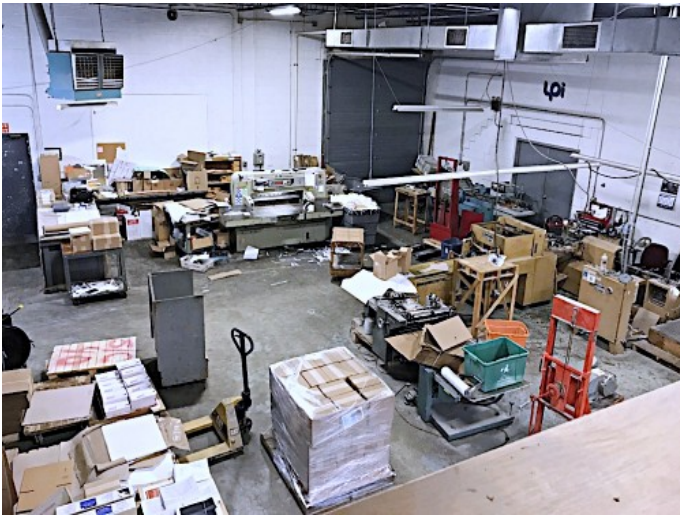
CARBONE Commercial Real Estate, Inc.

Your Professional Commercial-Investment Real Estate Source

Contact: **Edward Carbone** 781-935-5444 Edward@CarboneRE.com www.CarboneRE.com

All information furnished is from sources deemed reliable, but no warranty or representation is made as to the accuracy thereof, and the same is presented subject to errors, omissions, change of price, rental or other conditions, prior sale or lease, or withdrawal without notice.
Copyright 2019 Carbone Commercial Real Estate, Inc., agent of the Owner/Seller.

18 Spencer Street, Stoneham, MA



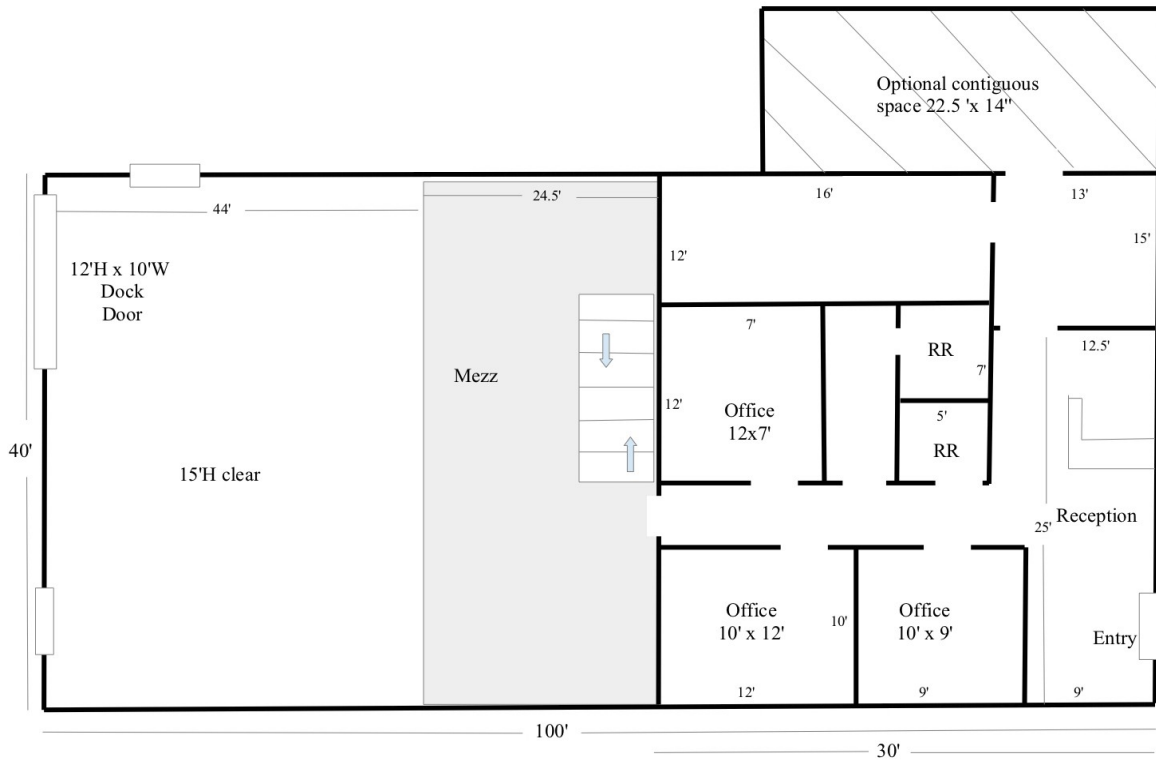
CARBONE Commercial Real Estate, Inc.

Your Professional Commercial-Investment Real Estate Source

Contact: Edward Carbone 781-935-5444 Edward@CarboneRE.com www.CarboneRE.com

18 Spencer Street, Stoneham, MA

18 SPENCER STREET, STONEHAM, MA



[Plan not drawn to scale. Plan not exact.]

Carbone Commercial Real Estate CarboneRE.com 781.935.5444 © 2019

CARBONE Commercial Real Estate, Inc.

Your Professional Commercial-Investment Real Estate Source

Contact: Edward Carbone 781-935-5444 Edward@CarboneRE.com www.CarboneRE.com