

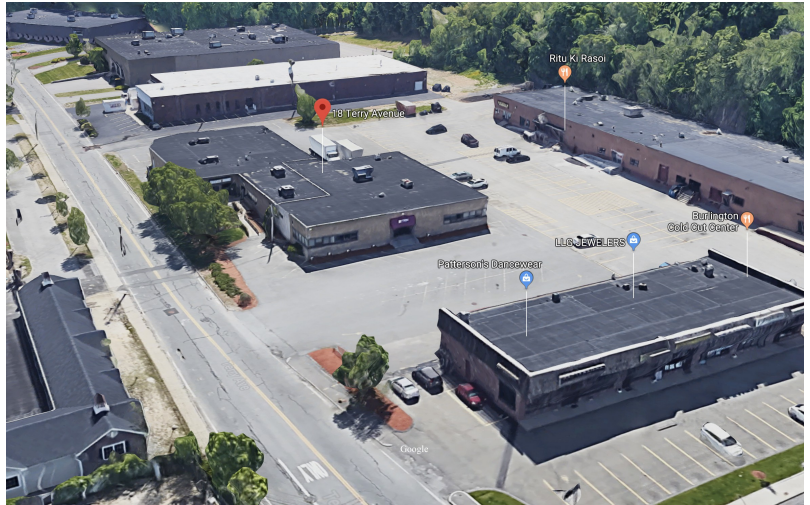
18 Terry Avenue, Burlington, MA



FOR LEASE

5,000 – 10,000 +/- SF FIRST FLOOR OFFICE

- 5,000 – 10,000 +/- sf, contiguous
- 6 private offices, conference room, server room, kitchen, open cube space
- Loading dock, overhead door
- Handicap access, ramp
- Private restrooms
- Gas heat, a/c, municipal water & sewer
- 3 phase power
- On-site shared parking
- \$13.50/sf/yr nnn
NNN estimate: \$3.50psf



CARBONE Commercial Real Estate, Inc.

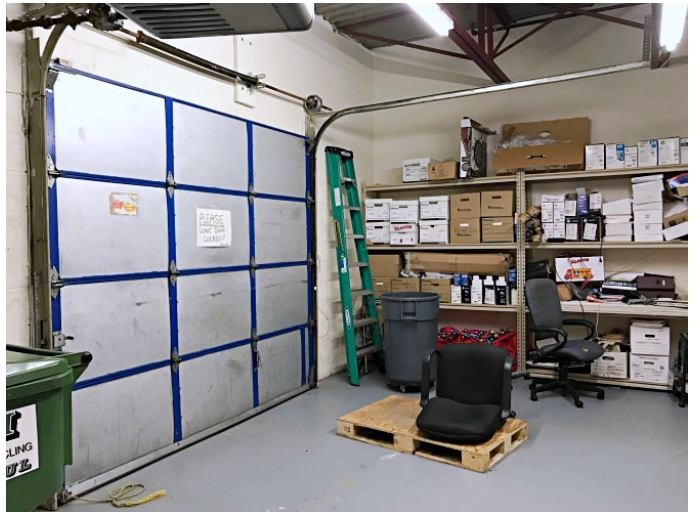
Your Professional Commercial-Investment Real Estate Source

Contact: Edward Carbone 781-935-5444 Edward@CarboneRE.com www.CarboneRE.com

All information furnished is from sources deemed reliable, but no warranty or representation is made as to the accuracy thereof, and the same is presented subject to errors, omissions, change of price, rental or other conditions, prior sale or lease, or withdrawal without notice.

Copyright © 2019 Carbone Commercial Real Estate, Inc., agent of the Owner/Seller.

18 Terry Avenue, Burlington, MA

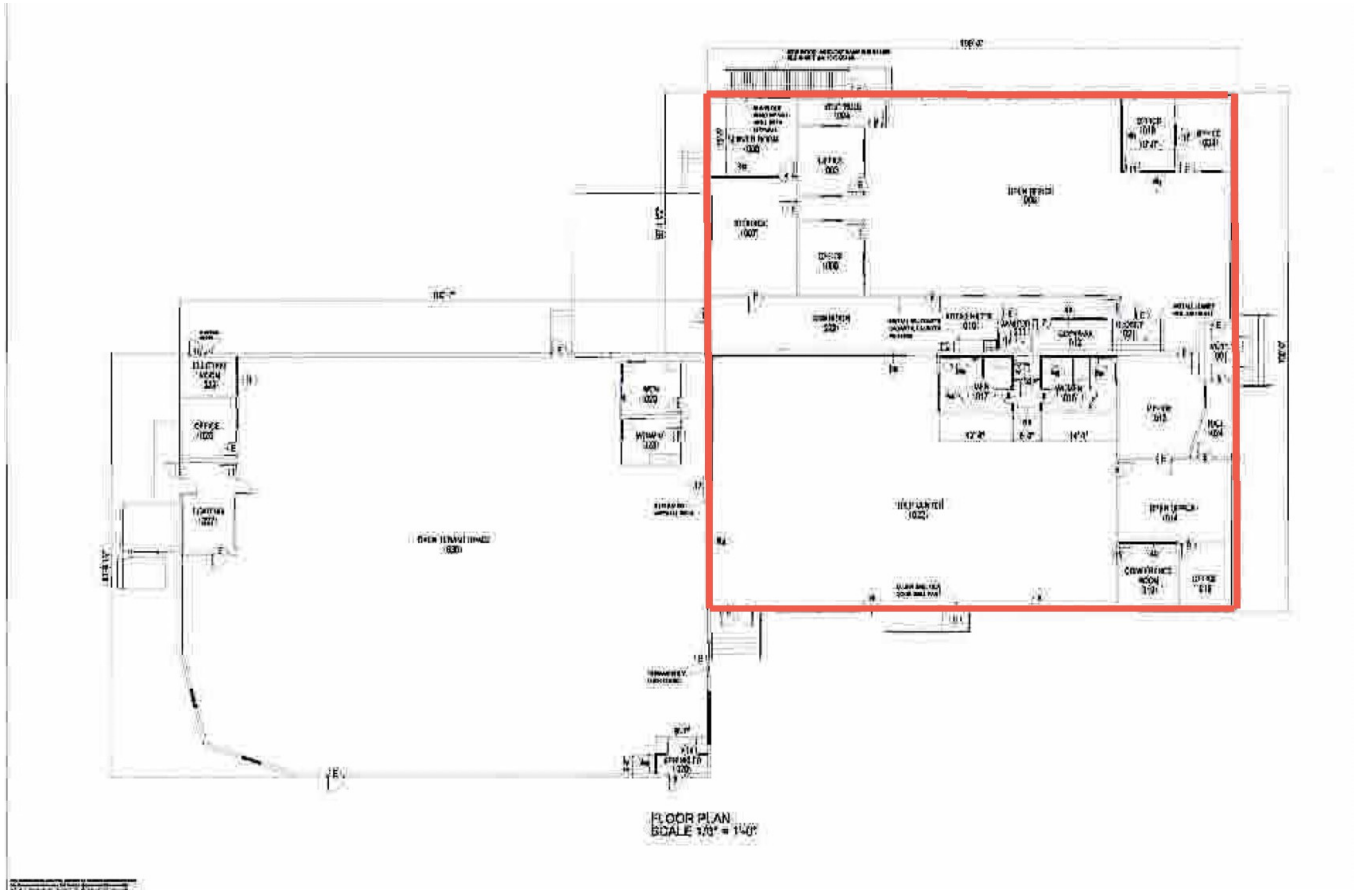


CARBONE Commercial Real Estate, Inc.

Your Professional Commercial-Investment Real Estate Source

Contact: Edward Carbone 781-935-5444 Edward@CarboneRE.com www.CarboneRE.com

18 Terry Avenue, Burlington, MA



Plan may not be exact.

CARBONE Commercial Real Estate, Inc.

Your Professional Commercial-Investment Real Estate Source

Contact: Edward Carbone 781-935-5444 Edward@CarboneRE.com www.CarboneRE.com