

1 ADELE ROAD, WOBURN, MA



PROPERTY

BUILDING: 10,520 +/- sf
LAND: 0.92 acres
YEAR BUILT: 1986 (Renovated 2019)
ZONING: IP (Industrial Park)
PARKING: 10-14 spaces
ROOF: Rubber membrane (2019)
LOCATION: 0.8 miles from the
Route 95/128 and 93
Interchange



INDUSTRIAL / WAREHOUSE

SPACE FOR LEASE

AVAILABLE: 10,520 +/- rsf
[additional 480 +/- sf mezzanine]
TYPE: Industrial / Warehouse
LOADING: Two (2) Loading Docks
CEILING HEIGHT: 16' +/-
HVAC: Gas (Ceiling Heaters)
SPRINKLERS: Wet
COLUMN SPACING: 25' X 30'
POWER: 1600 amps 3-phase 480v
LIGHTING: LED lights
UTILITIES: Gas Heat: National Grid
Electric: Eversource
Water/Sewer: City of Woburn
AVAILABLE: May 1, 2021

Edward Carbone, CCIM

781.935.5444 (o)

978.930.1579 (c)

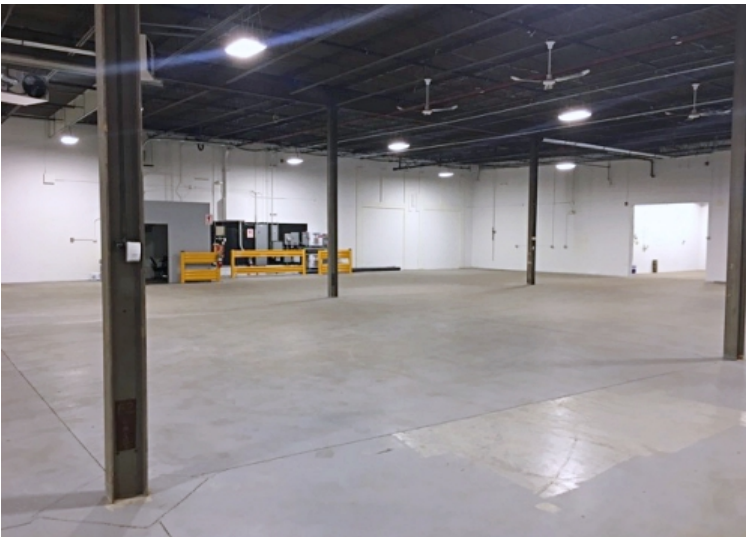
Edward@CarboneRE.com

CarboneRE.com

CARBONE Commercial Real Estate, Inc.

All information furnished is from sources deemed reliable, but no warranty or representation is made as to the accuracy thereof, and the same is presented subject to errors, omissions, change of price, rental or other conditions, prior sale or lease, or withdrawal without notice.
Copyright © 2021 Carbone Commercial Real Estate, Inc., agent of the Owner/Lessor.

1 ADELE ROAD, WOBURN, MA

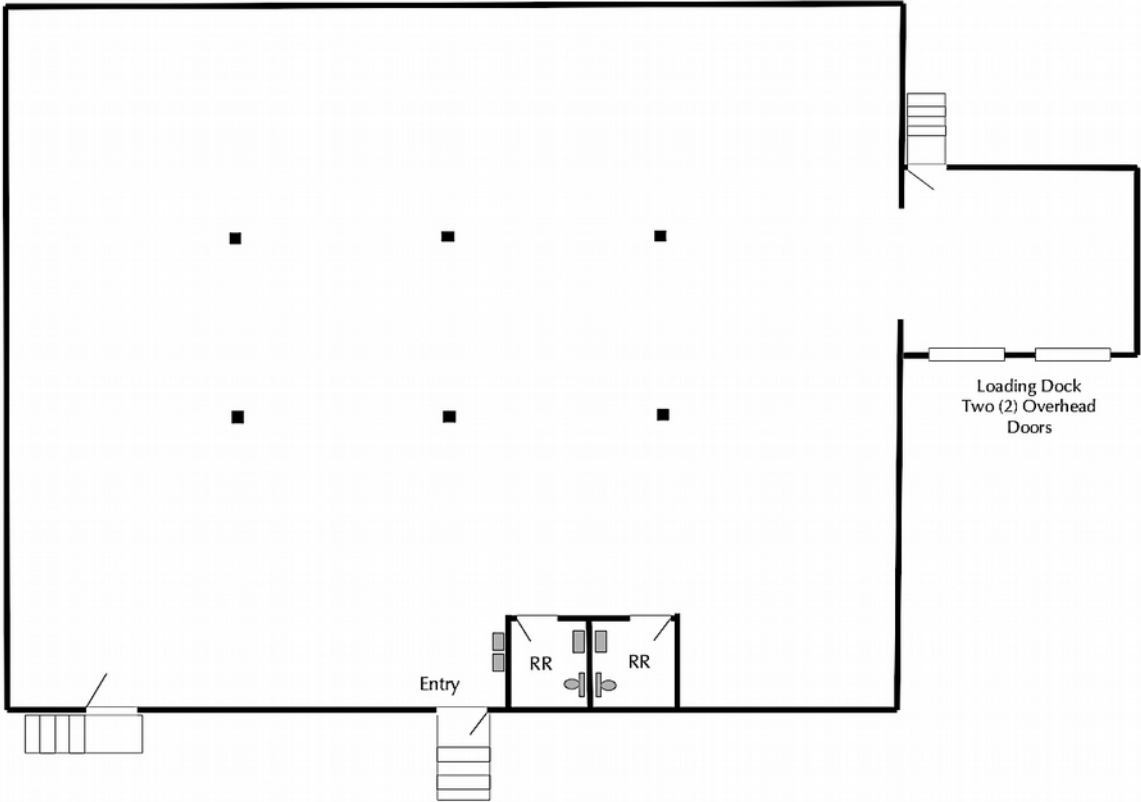


781.935.5444
CarboneRE.com

CARBONE Commercial Real Estate, Inc.

1 ADELE ROAD, WOBURN, MA

1 ADELE ROAD, WOBURN
INDUSTRIAL / WAREHOUSE 10,520 +/- SF



Plan not drawn to scale.
May not be exact.

CARBONE Commercial Real Estate
CarboneRE.com 781-935-5444
© 2020