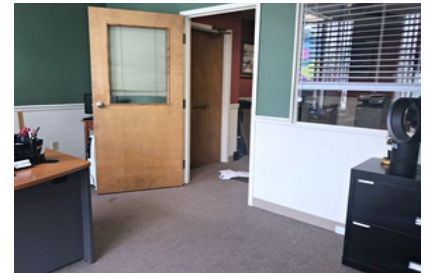


FOR LEASE: 1 Mountain Road, Burlington, MA



- 1,300 +/- rsf
- 4-room, first floor office
- Large open space: 23' x 17' 5"
- Ceiling: 8' 7" H
- Ample on-site parking
- 2' x 4' recessed lights, ceiling fan
- Located at the corner of Winn Street & Mountain Road; On the Woburn/Burlington line and approx. 0.4 miles to Route 128/95.
- \$2,000 per month plus utilities



CARBONE Commercial Real Estate, Inc.

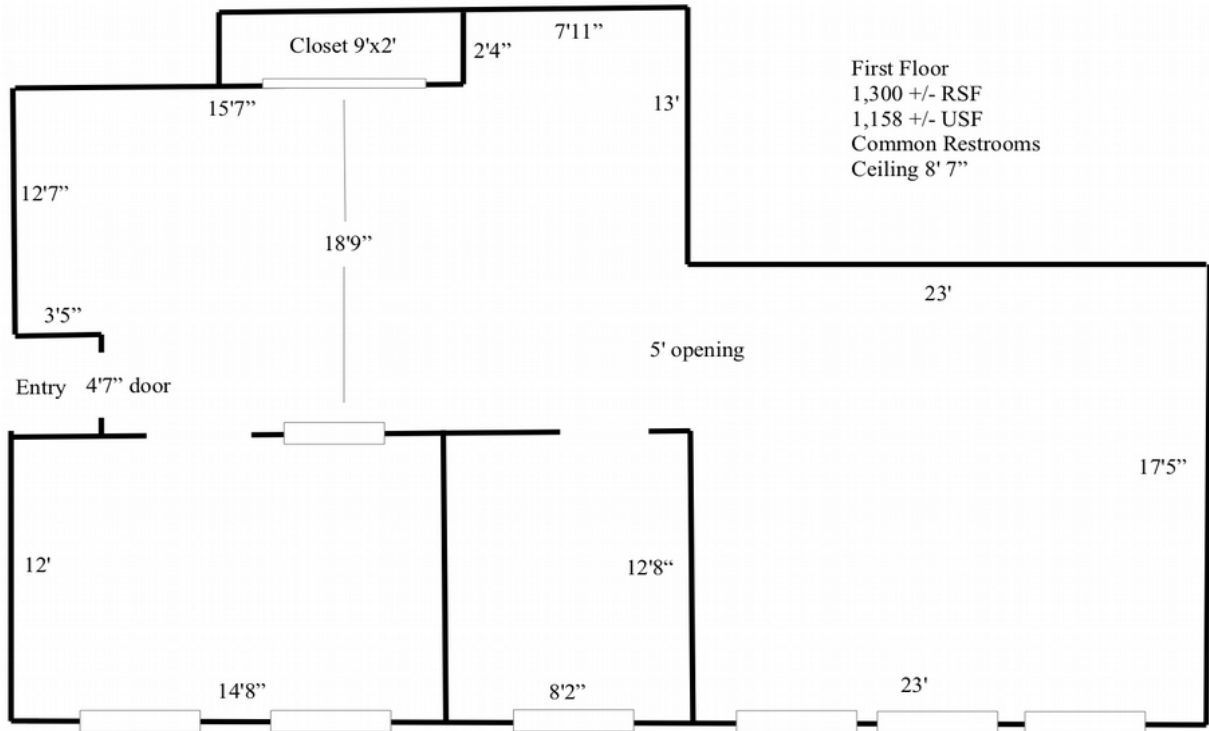
Your Professional Commercial-Investment Real Estate Source

Contact: Edward Carbone 781-935-5444 Edward@CarboneRE.com www.CarboneRE.com

All information furnished is from sources deemed reliable, but no warranty or representation is made as to the accuracy thereof, and the same is presented subject to errors, omissions, change of price, rental or other conditions, prior sale or lease, or withdrawal without notice.
Copyright 2020 Carbone Commercial Real Estate, Inc., agent of the Owner/Seller.

1 MOUNTAIN ROAD, BURLINGTON, MA

1,300 +/- RSF



[Plan not drawn to scale. Plan not exact.]

Carbone Commercial Real Estate CarboneRE.com 781.935.5444 © 2020