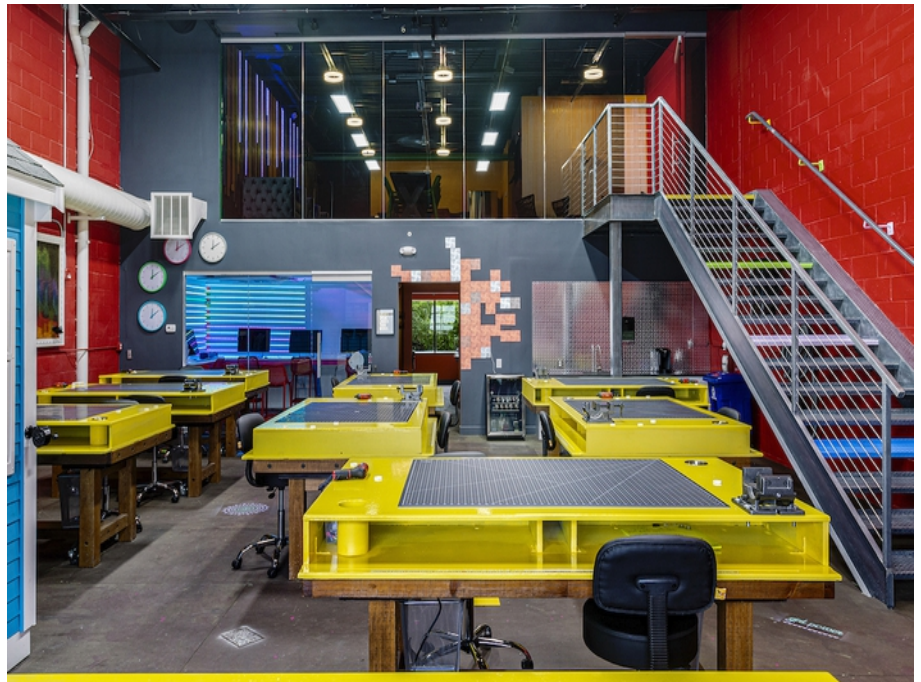


1 Presidential Way, Woburn, MA – Unit 104B



Industrial Condo with Office For Lease

- 2,817 +/- sf
- Loading dock
- Industrial: 1,047 +/- sf
- Office: 885 +/- sf 1st floor
885 +/- sf mezzanine
- 18' Ceiling (warehouse)
- 2 Kitchenettes; 3 Restrooms
- Ceiling hung gas heaters
- Parking: 4 assigned spaces;
common parking
- Zoned: IP2 (Industrial Park-2)
- Interstate Access: Route 93
and Route 128/95
- \$3,500 per month plus utilities



Edward Carbone, CCIM

781.935.5444 (o)

978.930.1579 (c)

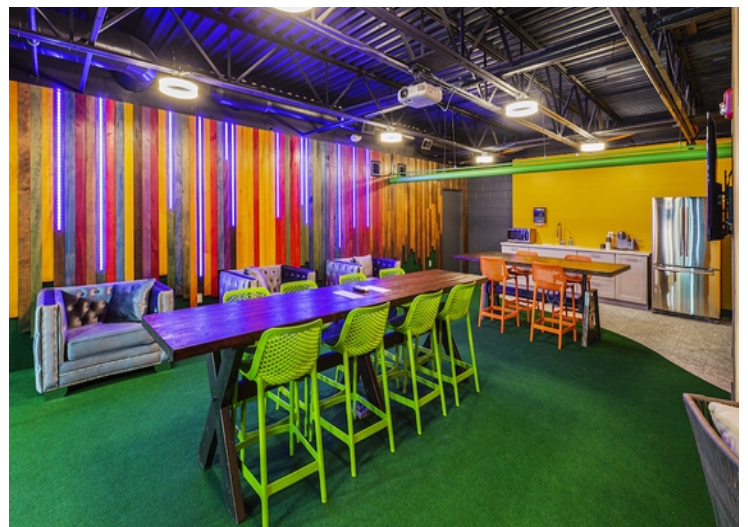
Edward@CarboneRE.com

CarboneRE.com

CARBONE Commercial Real Estate, Inc.

All information furnished is from sources deemed reliable, but no warranty or representation is made as to the accuracy thereof, and the same is presented subject to errors, omissions, change of price, rental or other conditions, prior sale or lease, or withdrawal without notice.
Copyright © 2020 Carbone Commercial Real Estate, Inc., agent of the Owner/Lessor.

1 Presidential Way, Woburn, MA - Unit 104B



781.935.5444
CarboneRE.com

CARBONE Commercial Real Estate, Inc.