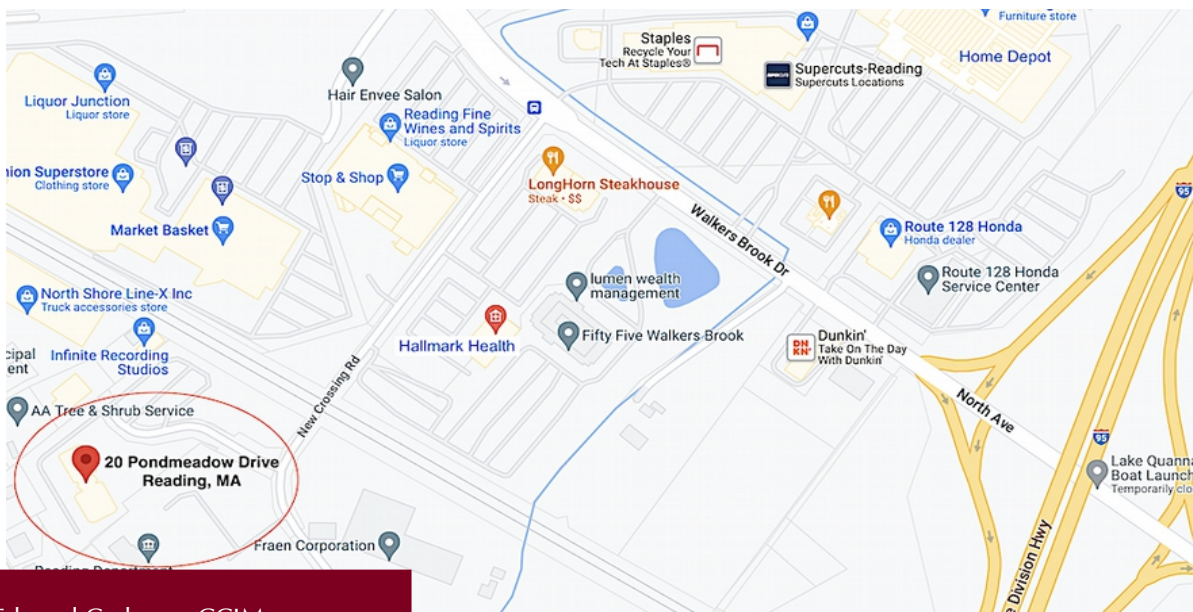


# 20 Pondmeadow Drive, Reading, MA



## Medical Office Suite For Lease

20 Pondmeadow Drive is a 16,000 +/- sf medical office condominium building in Reading, Massachusetts. The building is conveniently located 0.6 miles off Route 128/95 and has ample on-site parking for employees and patients. There is currently a 2,285 +/-rsf first floor medical suite available for lease. Call for details.



Edward Carbone, CCIM

781.935.5444 (o)

978.930.1579 (c)

Edward@CarboneRE.com

CarboneRE.com

## CARBONE Commercial Real Estate, Inc.

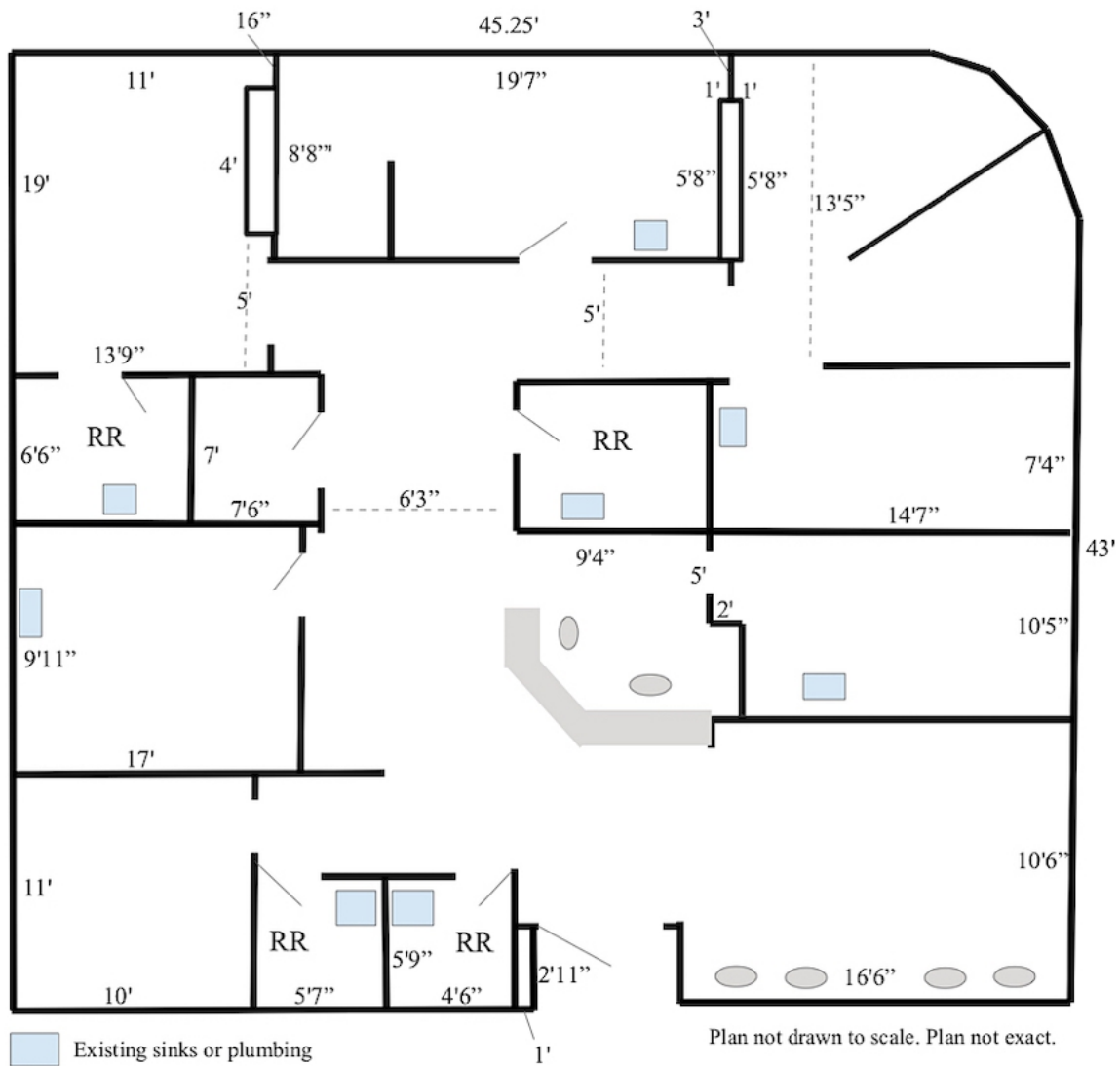
All information furnished is from sources deemed reliable, but no warranty or representation is made as to the accuracy thereof, and the same is presented subject to errors, omissions, change of price, rental or other conditions, prior sale or lease, or withdrawal without notice. Copyright © 2023 Carbone Commercial Real Estate, Inc., agent of the Owner/Lessor.

# 20 PONDMEADOW DRIVE, READING, MA

AS IS PLAN

## 20 PONDMEADOW DRIVE, READING, MA

UNIT 106



781.935.5444

CarboneRE.com

CARBONE Commercial Real Estate, Inc.

CONCEPTUAL PLANS

