

# 237 Lexington Street, Woburn, MA



## First Class Office Suites at Four Corners – For Lease

- Office Suites with private rooms, conference rooms, and/or open cube or training space
- Kitchenettes in many of the suites
- ADA accessible. Elevator.
- 130 +/- shared on-site daytime parking spaces
- Energy efficient building
- Located along Route 3. Easy access to Burlington, Winchester, Lexington and Woburn centers
- High traffic location
- Area amenities include coffee shops, restaurants, gas, banks, etc.



Edward Carbone, CCIM

781.935.5444 (o)

978.930.1579 (c)

Edward@CarboneRE.com

CarboneRE.com

## CARBONE Commercial Real Estate, Inc.

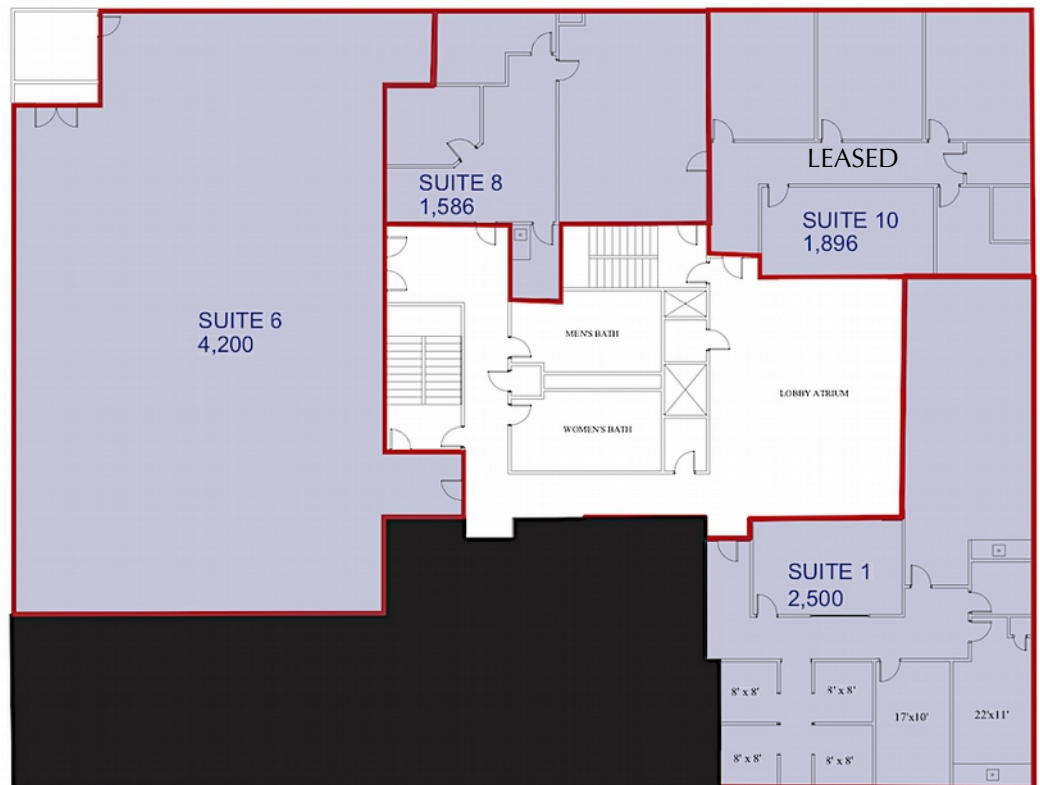
All information furnished is from sources deemed reliable, but no warranty or representation is made as to the accuracy thereof, and the same is presented subject to errors, omissions, change of price, rental or other conditions, prior sale or lease, or withdrawal without notice.  
Copyright © 2023 Carbone Commercial Real Estate, Inc.

## 237 Lexington Street, Woburn, MA



### AVAILABLE FOR LEASE - Lower Level

SUITE 1	2,500 +/-rsf, 8-Room office, 2 kitchenettes
SUITE 6	4,200 +/-rsf Large open office/training/showroom
SUITE 8	1,586 +/-rsf 4-Room office, kitchenette



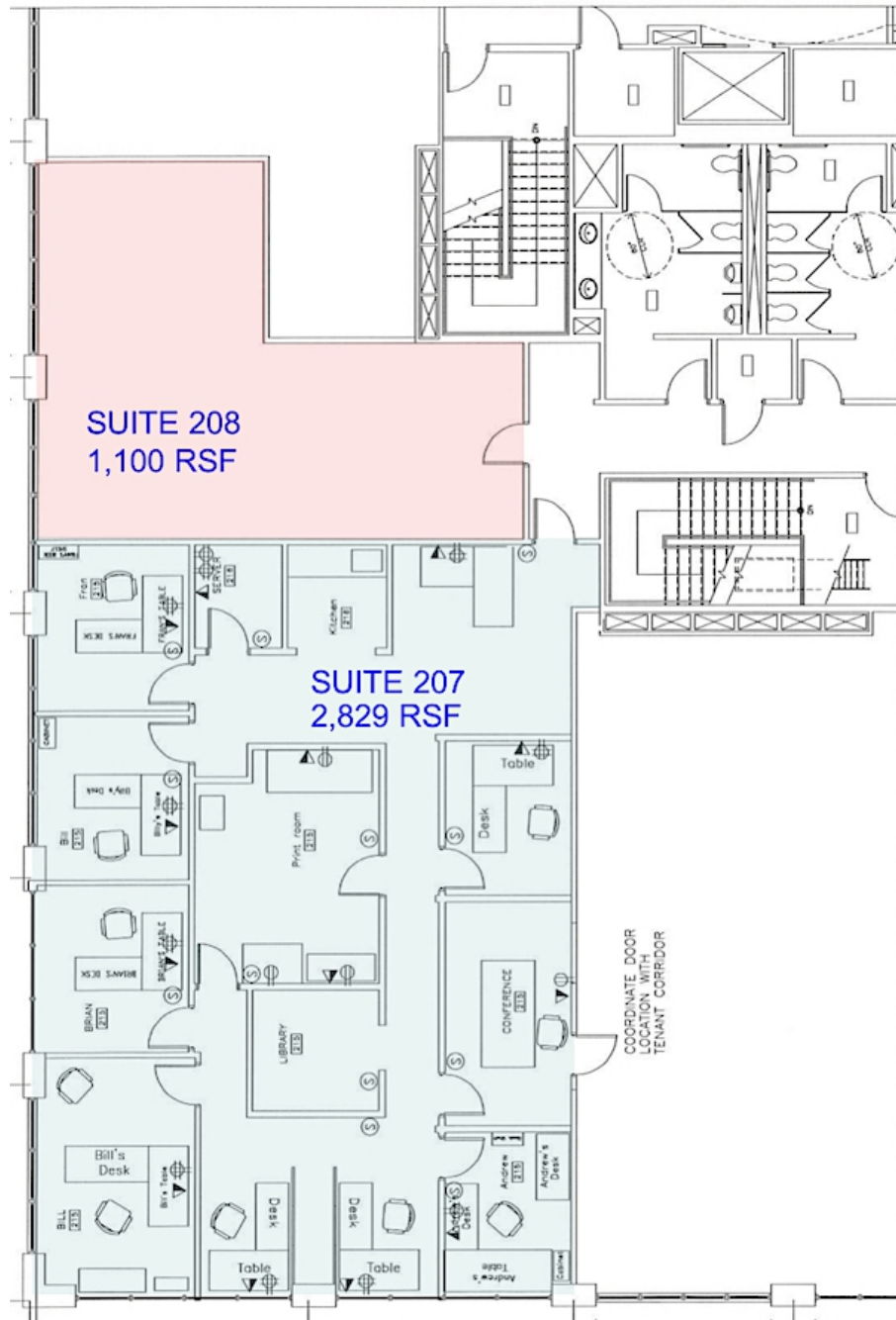
781.935.5444  
CarboneRE.com

CARBONE Commercial Real Estate, Inc.



AVAILABLE FOR LEASE - 2nd Floor

SUITE 207	2,829 +/-rsf 7 Private offices, conference, print room, and break room with kitchenette
SUITE 208	1,100 +/-rsf Large open office/training/showroom



781.935.5444

CarboneRE.com

CARBONE Commercial Real Estate, Inc.