

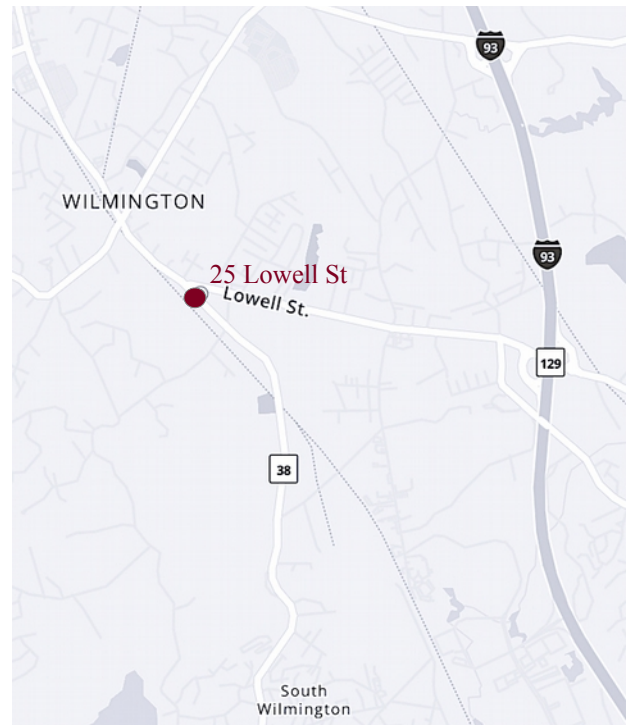
25 Lowell Street, Wilmington, MA



25 Lowell Street is a two-story, stand-alone office condominium building located along Routes 28 and 129 in Wilmington, Massachusetts. The building has 4 units and is currently home to a general dentist, an orthodontist, and an accountant.

Medical Office Condominium For Lease

- UNIT 1: 1,108 +/- sf medical office
- First Floor
- Private, handicap accessible entrance
- Reception with check-in & check-out
- Waiting room
- 3 Exam rooms with sinks
- 2 Private offices
- File storage room
- 1 Restroom in suite; 2 Restrooms in common hallway
- Sign visibility on building exterior
- Gas heat
- Common on-site daytime parking lot
- Condo fee currently \$441 per month (includes water & sewer (per owner).
- Available now
- \$2,000 per month plus condo fee & utilities.



Edward Carbone, CCIM

781.935.5444 (o)

978.930.1579 (c)

Edward@CarboneRE.com

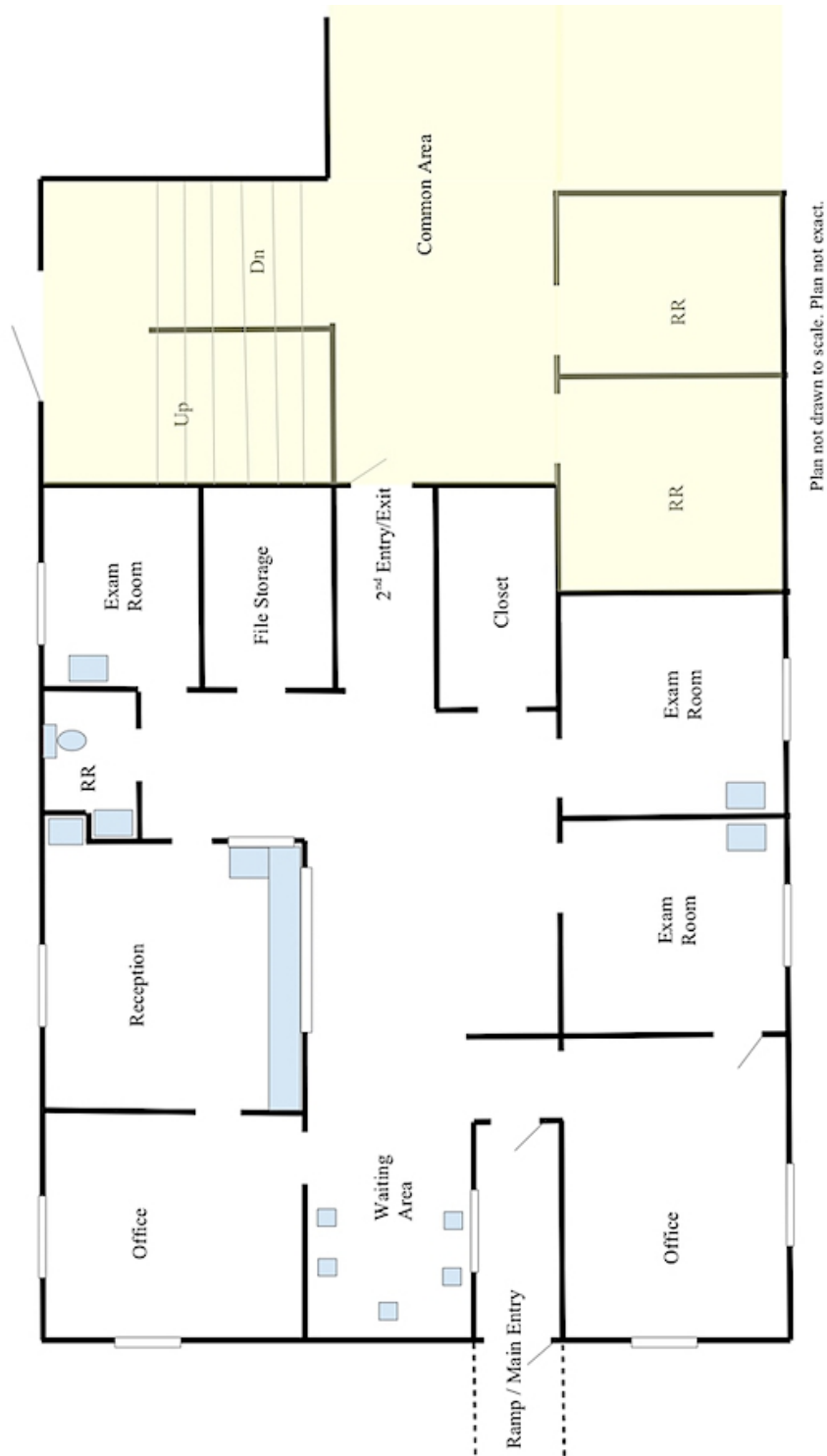
CarboneRE.com

CARBONE Commercial Real Estate, Inc.

All information furnished is from sources deemed reliable, but no warranty or representation is made as to the accuracy thereof, and the same is presented subject to errors, omissions, change of price, rental or other conditions, prior sale or lease, or withdrawal without notice. Copyright © 2024 Carbone Commercial Real Estate, Inc., agent of the Owner/Lessor.

25 LOWELL STREET, WILMINGTON, MA

UNIT 1 – FIRST FLOOR



781.935.5444

CarboneRE.com

CARBONE Commercial Real Estate, Inc.

25 LOWELL STREET, WILMINGTON, MA



781.935.5444
CarboneRE.com

CARBONE Commercial Real Estate, Inc.