

281 Cambridge Street, Burlington, MA



This medical office building on Route 3A in Burlington has ample on-site parking, handicap access, and an elevator. Available for lease:

OFFICE FOR LEASE

- 1,050 +/- rsf Office in medical building
- Lower level; handicap accessible
- Reception
- 3 Private rooms
- Former uses include physical therapy and education/tutoring office
- Common / shared break room in hall
- Common restroom
- \$1,400 per month including utilities



Edward Carbone, CCIM

781.935.5444 (o)

978.930.1579 (c)

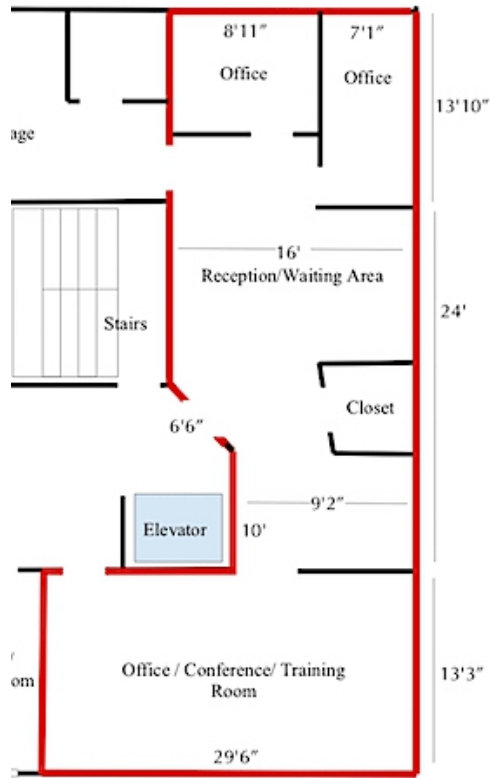
Edward@CarboneRE.com

CarboneRE.com

CARBONE Commercial Real Estate, Inc.

All information furnished is from sources deemed reliable, but no warranty or representation is made as to the accuracy thereof, and the same is presented subject to errors, omissions, change of price, rental or other conditions, prior sale or lease, or withdrawal without notice. Copyright © 2022 Carbone Commercial Real Estate, Inc., agent of the Owner/Lessor.

281 CAMBRIDGE STREET, BURLINGTON, MA



Plan not drawn to scale. Plan not exact.



Plan not drawn to scale. Plan not exact.

281 CAMBRIDGE STREET, BURLINGTON, MA



781.935.5444
CarboneRE.com

CARBONE Commercial Real Estate, Inc.