

281 Cambridge Street, Burlington, MA



Medical Offices For Lease

This medical office building on Route 3A in Burlington has ample on-site parking, handicap access, and an elevator. Available for lease:

FIRST FLOOR:

- 600 +/- sf
- 3 exam rooms, 1 private office
- 2 sinks
- \$1,775 per month including utilities

LOWER LEVEL:

- 540 +/- sf
- Reception, 2 private offices, kitchenette
- Private restroom in unit
- \$1,550 per month including utilities



CARBONE Commercial Real Estate, Inc.

Contact: Edward Carbone @ 781-935-5444

Edward@CarboneRE.com www.CarboneRE.com

Connect for updates:



All information furnished is from sources deemed reliable, but no warranty or representation is made as to the accuracy thereof, and the same is presented subject to errors, omissions, change of price, rental or other conditions, prior sale or lease, or withdrawal without notice. Copyright 2018 © Carbone Commercial Real Estate, Inc., agent of the Owner/Lessor.

281 Cambridge Street, Burlington, MA



BURLINGTON MEDICAL CENTER	
LOWER LEVEL	Family & Esthetic Dentistry
Dermatology & Dermatologic Surgery	Derek Song, D.M.D.
Dr. Barry S. Patel, MD-Dermatology	Richard S. Lewis D.M.D.
Kerstin Cmok N. P.	Louis A. Bruno D.M.D.
	Yumi Ogata DMD
ShineIn Math Academy, LLC	Childrens Dentistry
	Alex Okoye D.M.D.
FIRST LEVEL	SECOND LEVEL
Burlington Pediatrics, LLC	General Computer Resources
Richard G. Ruben, MD Pediatrician	GCR Professional Services
Benjamin Scheinlin, MD Pediatrician	
Victoria J. Seward, MD Pediatrician	GFC Holdings, LLC
Karen A. Cotting, MD Pediatrician	
Burlington Podiatry Associates	
JMH PODIATRY	
Dr. John Hurchik	
Dr. Sarah Montgomery	



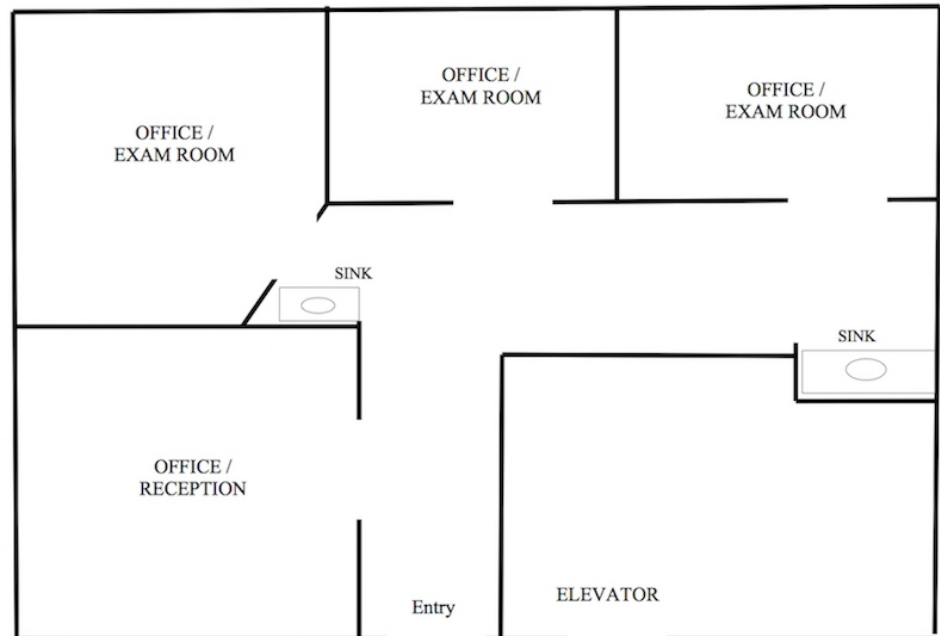
CARBONE Commercial Real Estate, Inc.

Your Professional Commercial-Investment Real Estate Source

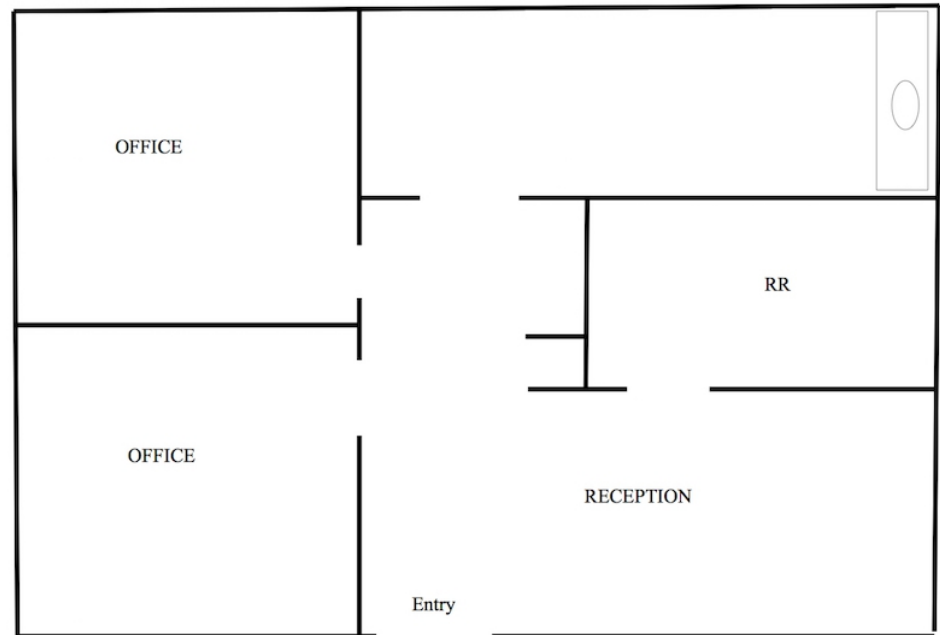
Contact: Edward Carbone 781-935-5444 Edward@CarboneRE.com www.CarboneRE.com

281 Cambridge Street, Burlington, MA

600 +/- SF
FIRST FLOOR



540 +/- SF
LOWER LEVEL



Plans not drawn to scale. Plans not exact.

CARBONE Commercial Real Estate, Inc.

Your Professional Commercial-Investment Real Estate Source

Contact: Edward Carbone 781-935-5444 Edward@CarboneRE.com www.CarboneRE.com