

# FOR LEASE: 28 Summer Avenue, Waltham, MA



## 4,211 +/- SF Industrial Garage Condo

- 4,211 +/- sf Industrial Garage Condo
- 2,831 +/- sf excl. use driveway access
- 1 Drive-In loading door  
17'W x 9'4"H
- Clear height approx. 8-9 feet
- Year Built 2015
- Zoned: Commercial
- Floor drain
- Sprinkler system
- Natural gas
- Rubber membrane roof
- \$16.80 per month plus utilities



## CARBONE Commercial Real Estate, Inc.

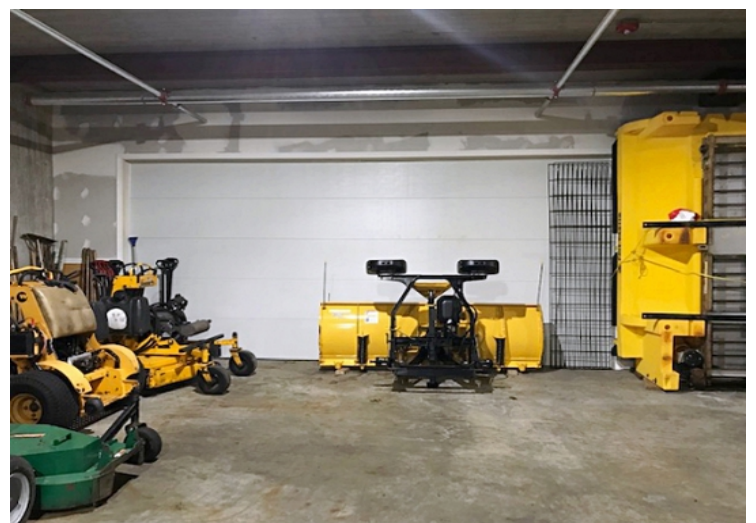
Your Professional Commercial-Investment Real Estate Source

Contact: Edward Carbone 781-935-5444 Edward@CarboneRE.com www.CarboneRE.com

All information furnished is from sources deemed reliable, but no warranty or representation is made as to the accuracy thereof, and the same is presented subject to errors, omissions, change of price, rental or other conditions, prior sale or lease, or withdrawal without notice.  
Copyright 2020 Carbone Commercial Real Estate, Inc., agent of the Owner/Seller.



# 28 Summer Avenue, Waltham, MA



**CARBONE Commercial Real Estate, Inc.**

Your Professional Commercial-Investment Real Estate Source

Contact: **Edward Carbone** 781-935-5444 [Edward@CarboneRE.com](mailto:Edward@CarboneRE.com) [www.CarboneRE.com](http://www.CarboneRE.com)