

312 Main Street, Wilmington, MA



For Sale

312 Main Street is a commercial property with a single-story building on 0.68 acres in Wilmington, Massachusetts. The property consists of an office and an attached garage with an oversized, overhead door. Located directly on Route 38, the property offers excellent visibility, parking toward the front, and an additional parking lot in the rear.



Edward Carbone, CCIM

781.935.5444 (o)

978.930.1579 (c)

Edward@CarboneRE.com

CarboneRE.com

CARBONE Commercial Real Estate, Inc.

All information furnished is from sources deemed reliable, but no warranty or representation is made as to the accuracy thereof, and the same is presented subject to errors, omissions, change of price, rental or other conditions, prior sale or lease, or withdrawal without notice. Copyright © 2021 Carbone Commercial Real Estate, Inc., agent of the Owner/Lessor.

312 Main Street, Wilmington, MA



OFFICE
WITH
GARAGE
& REAR
LOT



Property Features

LAND AREA:	0.68 acres
BUILDING AREA:	Total: 2,670 +/- sf Office: 1,412 +/- sf Garage: 1,258 +/- sf
BASEMENT:	1,350 +/- sf unfinished
CEILING HEIGHTS:	Office: 8'+/- drop Garage: TBD
LOADING:	1 ground level overhead door
MBLU:	42/ /25/ /
ZONING:	GB; R-20
RE TAXES:	\$10,466.19 +/- (FY2021)
WATER/SEWER:	Municipal
UTILITIES:	heat fuel oil

781.935.5444

CarboneRE.com

CARBONE Commercial Real Estate, Inc.

All information furnished is from sources deemed reliable, but no warranty or representation is made as to the accuracy thereof, and the same is presented subject to errors, omissions, change of price, rental or other conditions, prior sale or lease, or withdrawal without notice.
Copyright © 2021 Carbone Commercial Real Estate, Inc., agent of the Owner/Lessor.

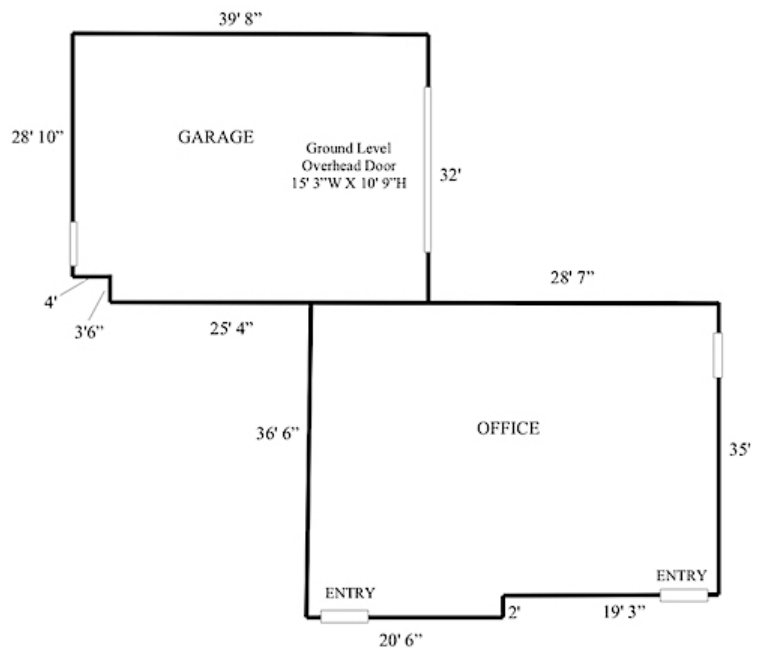
312 Main Street, Wilmington, MA



Source: Town of Wilmington, MA Assessors Dept.



Source: Town of Wilmington, MA Assessors Dept.



Plan not drawn to scale. Plan not exact.

781.935.5444

CarboneRE.com

CARBONE Commercial Real Estate, Inc.