

# 34 Linnell Circle, Billerica, MA



## INDUSTRIAL WAREHOUSE / OFFICE - FOR LEASE

- 16,300 +/- sf
- Warehouse with Office
- Office approximately 4,000 sf
- 2 Loading Docks, overhead doors
- Warehouse ceiling: 12'H +/-
- Power: 3 phase, 600 amps
- Gas Heat
- Zoned: Industrial
- Located along Middlesex Turnpike, approximately 2.8 miles to Route 3 at either Crosby Drive or Concord Road
- \$14.00 per sf nnn



Edward Carbone, CCIM

781.935.5444 (o)

978.930.1579 (c)

Edward@CarboneRE.com

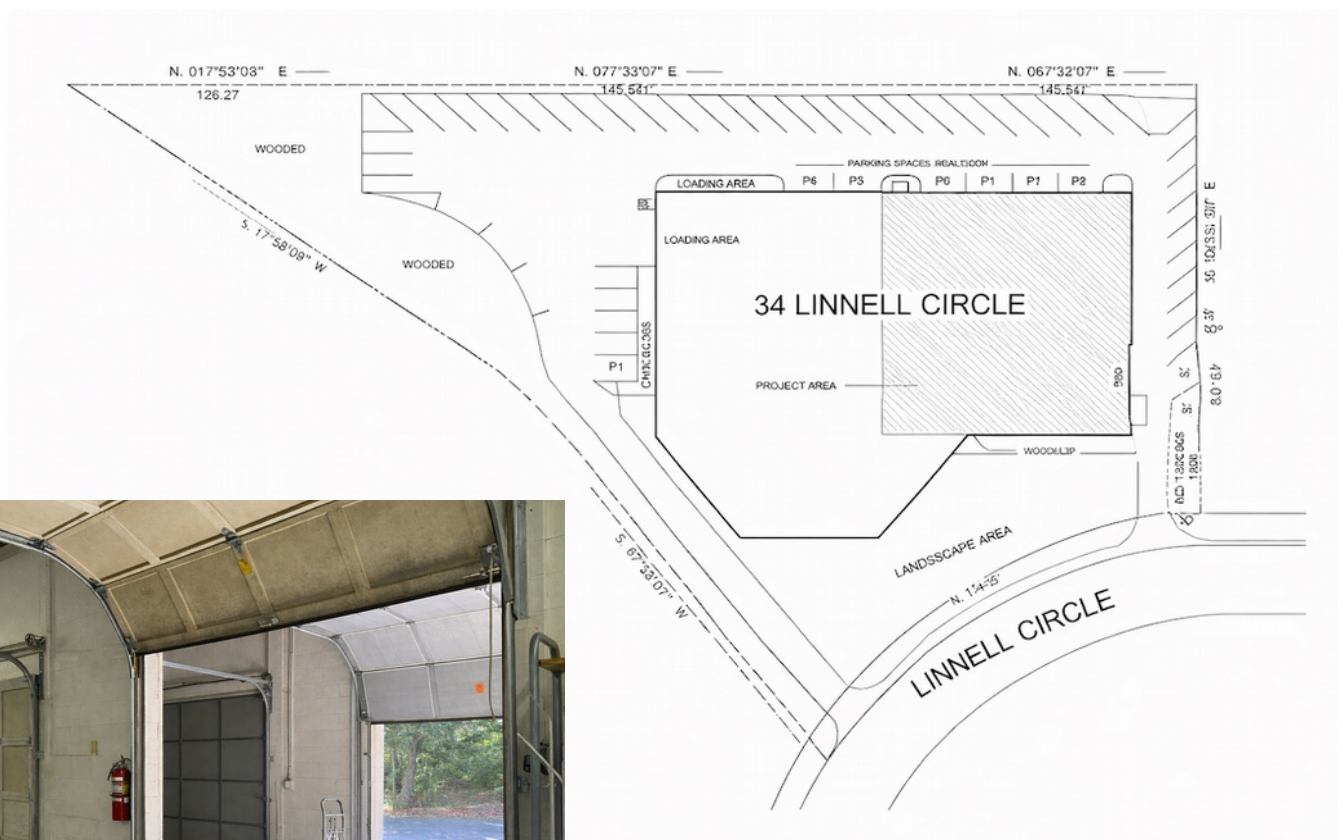
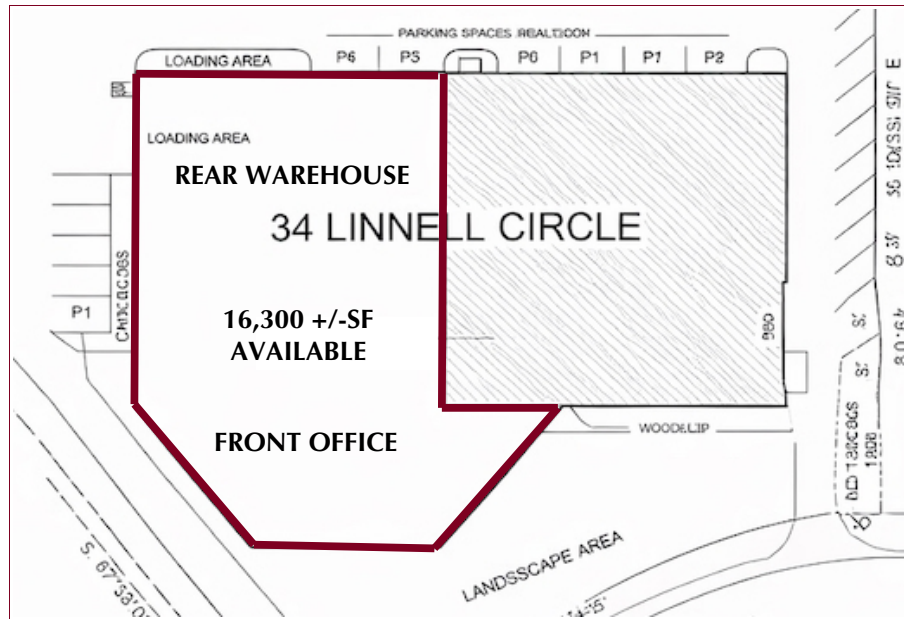
CarboneRE.com

## CARBONE Commercial Real Estate, Inc.

This space is listed for lease by Greater Boston Commercial Properties, Inc. All information furnished is from sources deemed reliable, but no warranty or representation is made as to the accuracy thereof, and the same is presented subject to errors, omissions, change of price, rental or other conditions, prior sale or lease, or withdrawal without notice. Copyright © 2026 Carbone Commercial Real Estate, Inc.



# 34 LINNELL CIRCLE, BILLERICA, MA



781.935.5444 (o)  
CarboneRE.com

CARBONE Commercial Real Estate, Inc.