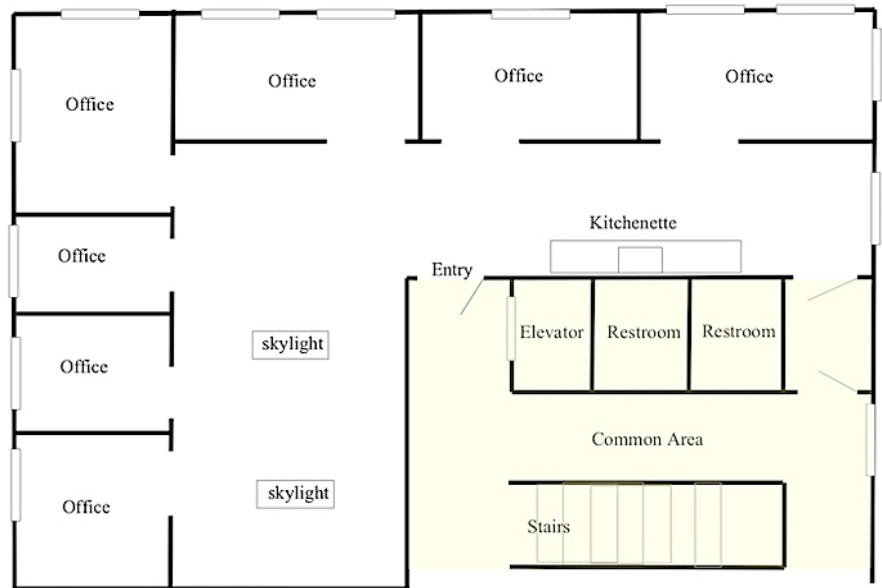


36 Commerce Way, Woburn, MA



OFFICE FOR LEASE

- 2,000 +/- rsf
- 4th Floor. Elevator
- 7 Private offices
- Open space suitable for 2-3 desks, conference table, or files
- Kitchenette
- Common restrooms
- Ample, on-site parking
- Conveniently located 0.5 miles to Route 95/128 and 0.7 miles to Route 93.
- Area amenities include Woburn Village, Market Basket, HomeGoods, Target, Lowes, restaurants, banks, and more.
- Sub-lease available through August 31, 2023.
- \$21.00 per sf plus utilities



Plan not drawn to scale. Plan not exact.

Edward Carbone, CCIM

781.935.5444 (o)

978.930.1579 (c)

Edward@CarboneRE.com

CarboneRE.com

CARBONE Commercial Real Estate, Inc.

All information furnished is from sources deemed reliable, but no warranty or representation is made as to the accuracy thereof, and the same is presented subject to errors, omissions, change of price, rental or other conditions, prior sale or lease, or withdrawal without notice. Copyright © 2022 Carbone Commercial Real Estate, Inc., agent of the Owner/Lessor.

36 COMMERCE WAY, WOBURN, MA



781.935.5444
CarboneRE.com

CARBONE Commercial Real Estate, Inc.