

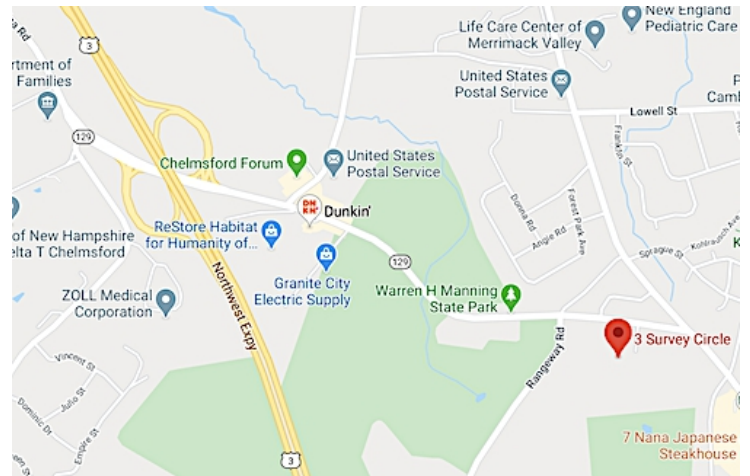
3 Survey Circle, Billerica, MA



3 Survey Circle is a 9,216 +/-sf, two-story office building consisting of four condominium units, two per floor.

FOR SALE: CONDOMINIUM UNITS 3 & 4

- 2,304 +/- sf each unit
- Second floor (no elevator)
- New roof (June 2020)
- Parking: 46 +/- shared, on-site spaces
- Building HVAC: 1 per unit
- Attic for mechanicals
- Fire Sprinklers
- Septic; Gas heat
- Zoned: General Business
- RE Tax: \$5,347/year per unit (FY2021)
- Condo Fee: \$450/month per unit
- Located just off Route 129 and 1.0 mile to Route 3
- For Sale: \$309,000 per unit



Edward Carbone, CCIM

781.935.5444 (o)

978.930.1579 (c)

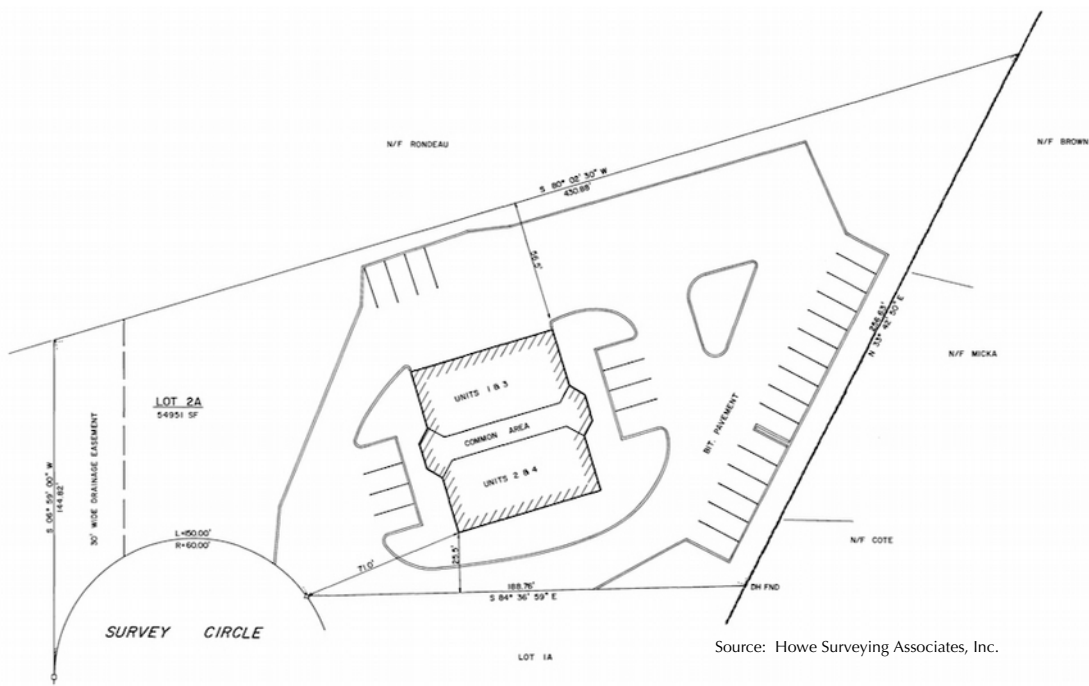
Edward@CarboneRE.com

CarboneRE.com

CARBONE Commercial Real Estate, Inc.

All information furnished is from sources deemed reliable, but no warranty or representation is made as to the accuracy thereof, and the same is presented subject to errors, omissions, change of price, rental or other conditions, prior sale or lease, or withdrawal without notice. Copyright © 2021 Carbone Commercial Real Estate, Inc., agent of the Owner/Lessor.

3 Survey Circle, Billerica, MA



Edward Carbone, CCIM

781.935.5444 (o)

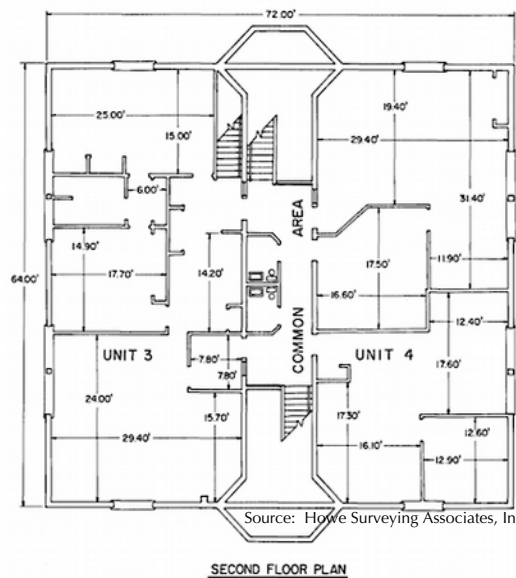
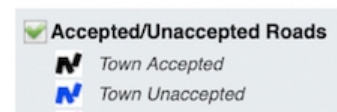
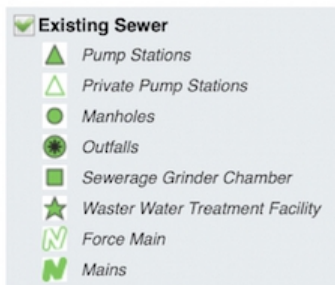
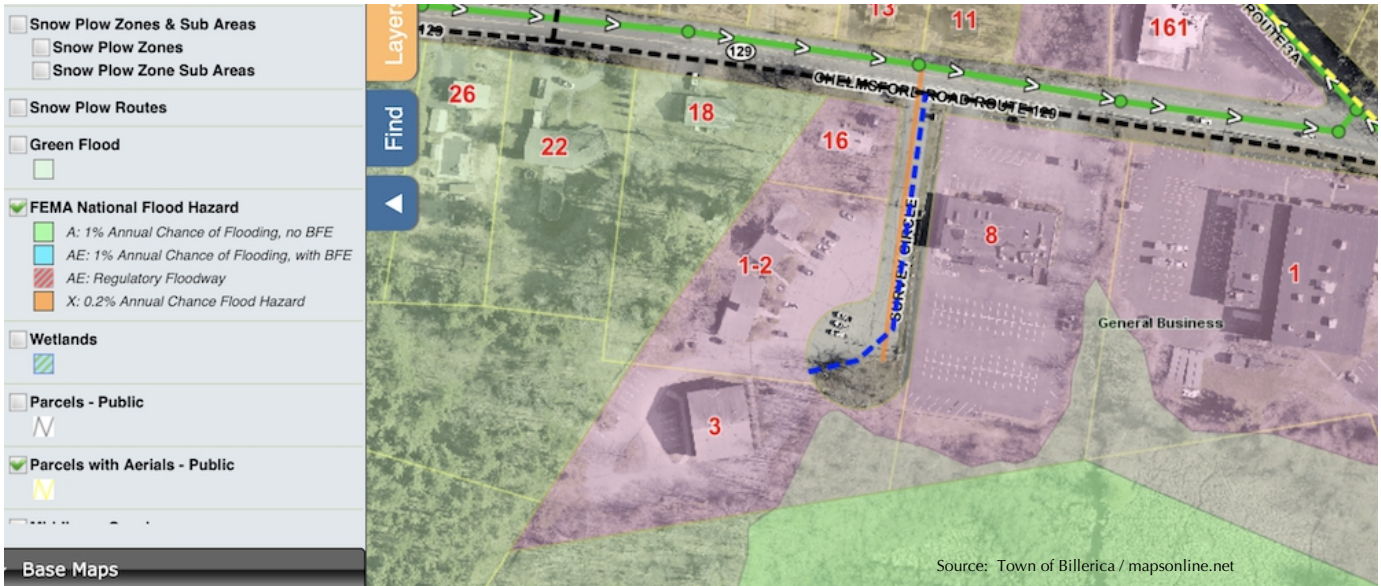
978.930.1579 (c)

Edward@CarboneRE.com

CarboneRE.com

CARBONE Commercial Real Estate, Inc.

3 Survey Circle, Billerica, MA



Edward Carbone, CCIM
 781.935.5444 (o)
 978.930.1579 (c)
 Edward@CarboneRE.com
 CarboneRE.com

CARBONE Commercial Real Estate, Inc.