

470 Wildwood Avenue, Woburn, MA - Unit 4



10,000 SF INDUSTRIAL WITH OFFICE SPACE

470 Wildwood is a 60,000 +/- sf industrial building located in one of Woburn's premier industrial parks and approximately 1.1 mile to Routes 95/128 and 93.

FOR LEASE

- 10,000 +/- sf available (Unit 4)
- Two (2) dedicated tailgate height loading dock doors (8'x8')
- 16.5'H +/- clear
- 175 +/- shared parking spaces
- Zoned: I-P (Industrial Park)
- \$13.50 per sf NNN*

*2021 nets: \$3.78/sf



Edward Carbone, CCIM

781.935.5444 (o)

978.930.1579 (c)

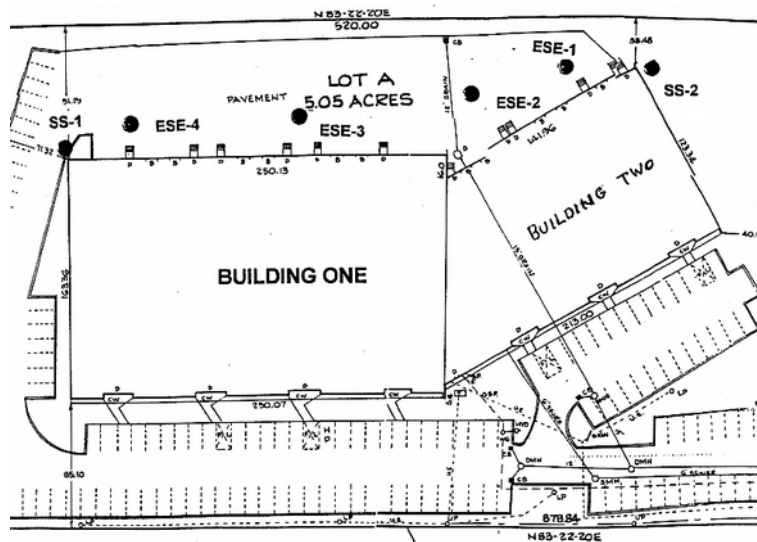
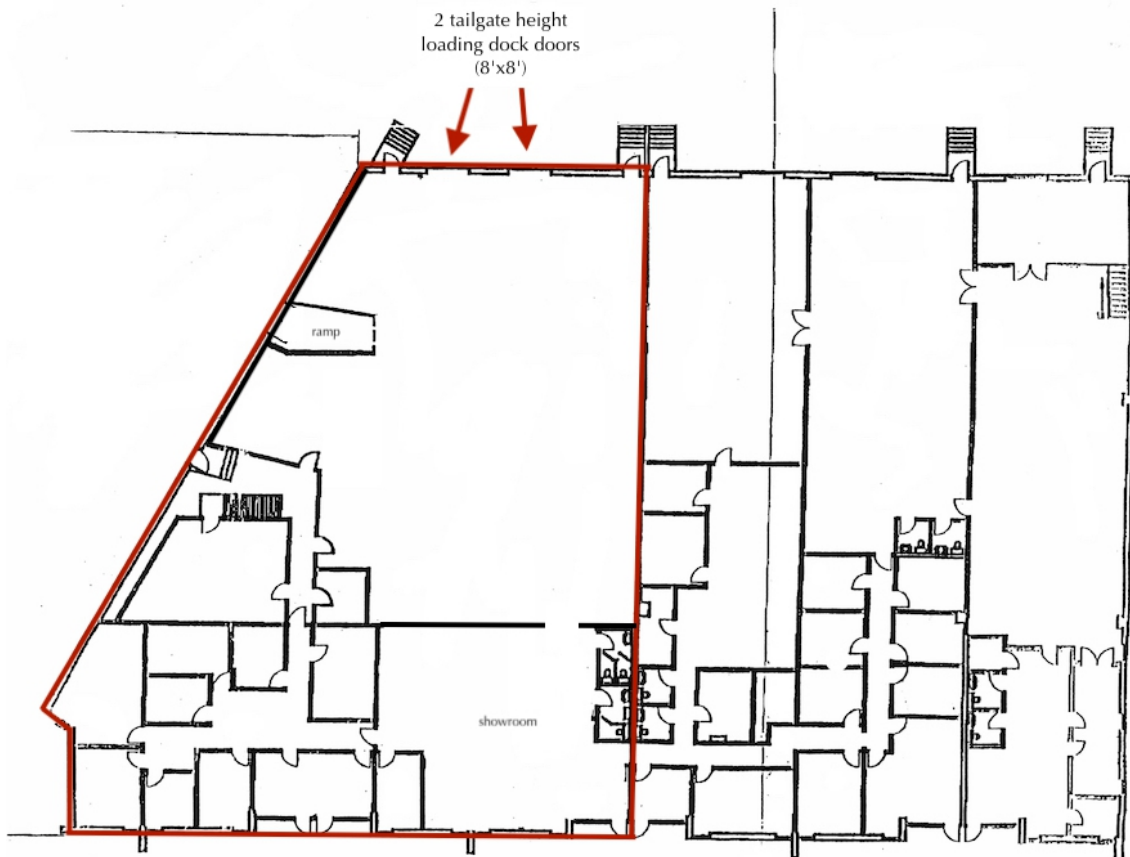
Edward@CarboneRE.com

CarboneRE.com

CARBONE Commercial Real Estate, Inc.

All information furnished is from sources deemed reliable, but no warranty or representation is made as to the accuracy thereof, and the same is presented subject to errors, omissions, change of price, rental or other conditions, prior sale or lease, or withdrawal without notice. Copyright © 2022 Carbone Commercial Real Estate, Inc., agent of the Owner/Lessor.

470 WILDWOOD AVENUE, WOBURN, MA



781.935.5444
CarboneRE.com

CARBONE Commercial Real Estate, Inc.

470 WILDWOOD AVENUE, WOBURN, MA



781.935.5444
CarboneRE.com

CARBONE Commercial Real Estate, Inc.