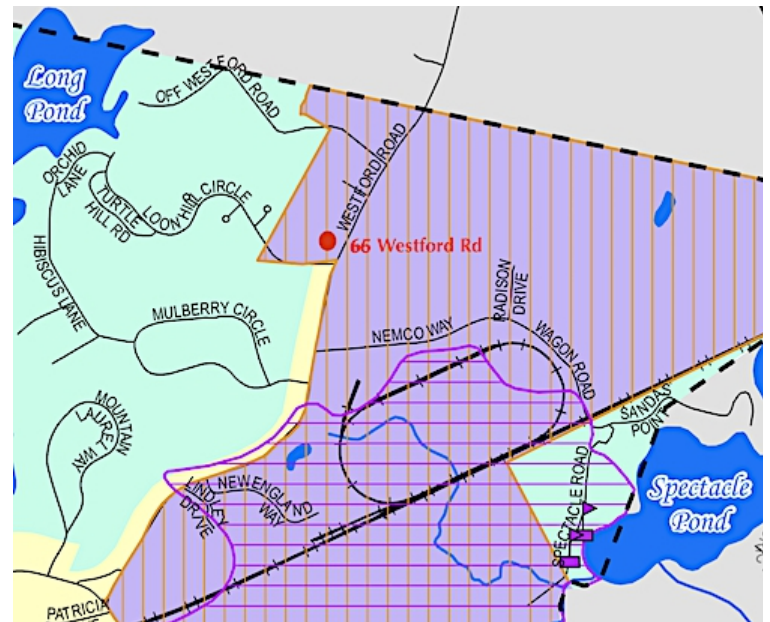


FOR LEASE: 66 Westford Road, Ayer, MA



New Construction Contractor Garage Bay

- Unit 4: 1,500 +/- sf
- \$2,250 per month + utilities
- Heated, insulated
- Overhead Drive-In Doors: 14'x14'
- Floor Drains
- Ceiling: pitched roof +/-17'-19'
- Restroom
- Parking: possible outside, overnight (TBD)
- Est. Availability: August 1, 2020



CARBONE Commercial Real Estate, Inc.

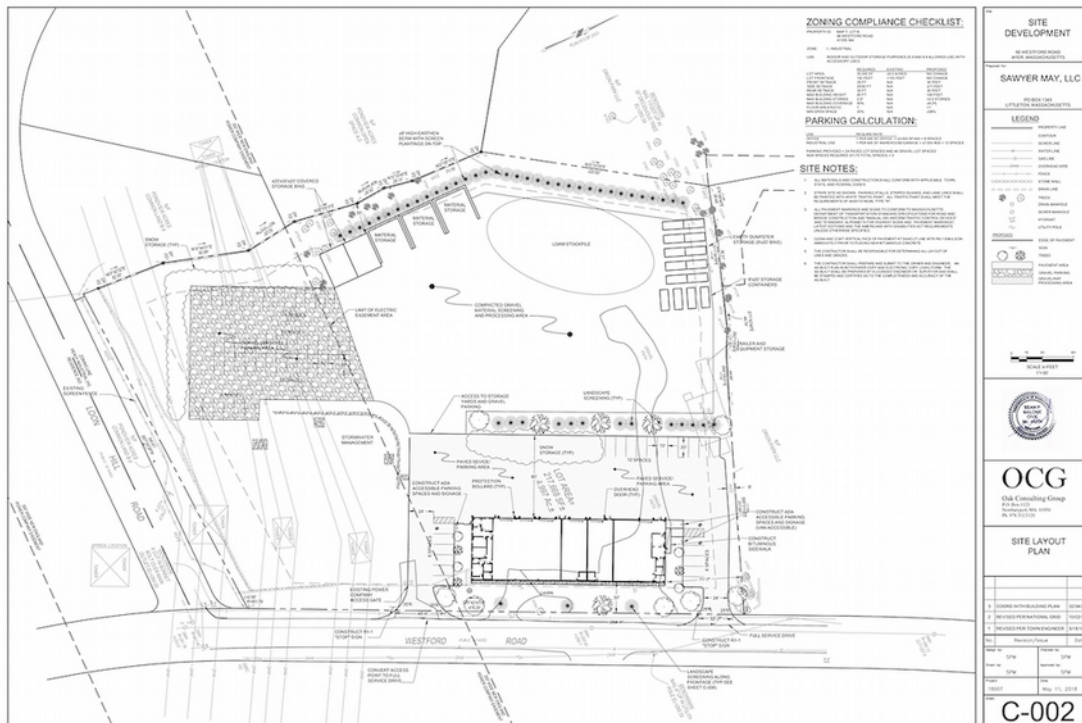
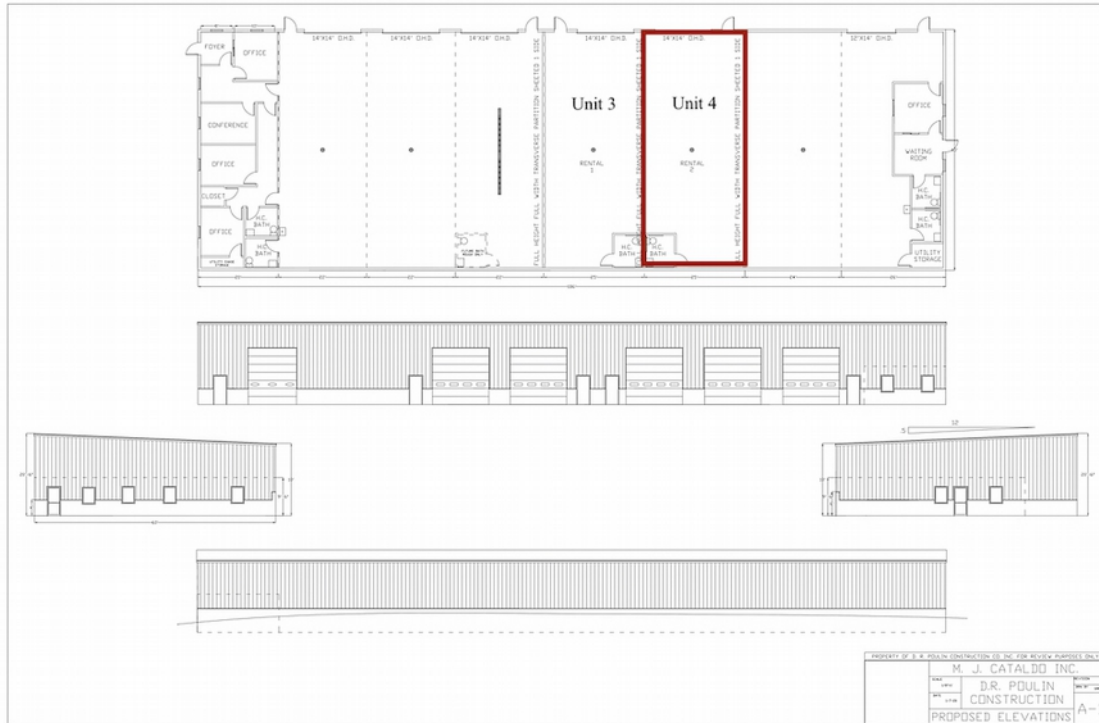
Your Professional Commercial-Investment Real Estate Source

Contact: **Edward Carbone** 781-935-5444 Edward@CarboneRE.com www.CarboneRE.com

All information furnished is from sources deemed reliable, but no warranty or representation is made as to the accuracy thereof, and the same is presented subject to errors, omissions, change of price, rental or other conditions, prior sale or lease, or withdrawal without notice.

Copyright © 2020 Carbone Commercial Real Estate, Inc.

66 Westford Road, Ayer, MA

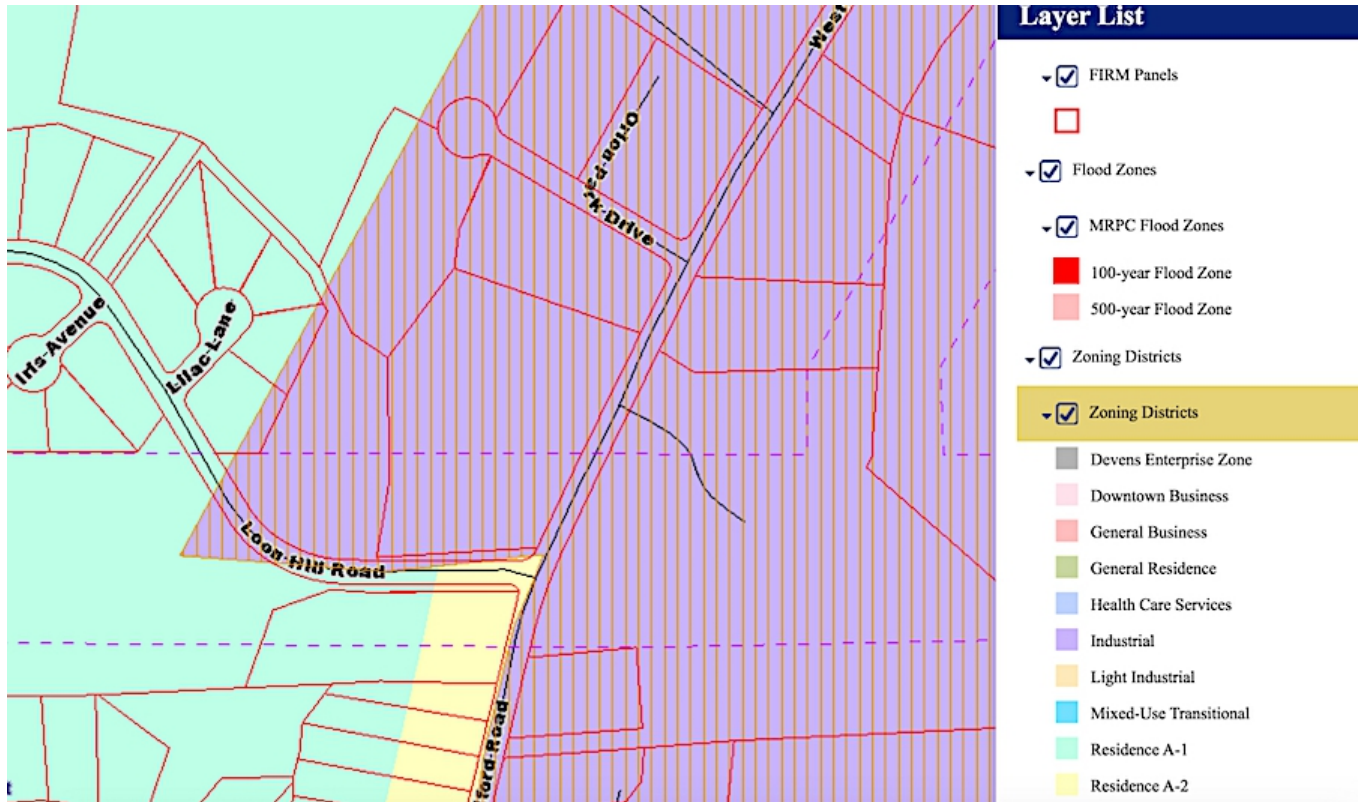


CARBONE Commercial Real Estate, Inc.

Your Professional Commercial-Investment Real Estate Source

Contact: Edward Carbone 781-935-5444 Edward@CarboneRE.com www.CarboneRE.com

66 Westford Road, Ayer, MA



CARBONE Commercial Real Estate, Inc.

Your Professional Commercial-Investment Real Estate Source

Contact: Edward Carbone 781-935-5444 Edward@CarboneRE.com www.CarboneRE.com