

760 Main Street, Wilmington, MA



First Floor Corner Office Space in Newly Renovated Building

- UNIT 101: 2,500 +/- sf
- First floor, corner suite with expansive window lines
- Wide open vanilla box
- Finished drop ceiling 12'H +/-
- 2 Restrooms; 1 shower
- Concrete floor
- On-site front parking
- Zoned: General Industrial
- Located along Route 38, approximately 2 miles from Route 93
- Available now
- \$25.20 per sf + utilities



Edward Carbone, CCIM

781.935.5444 (o)

978.930.1579 (c)

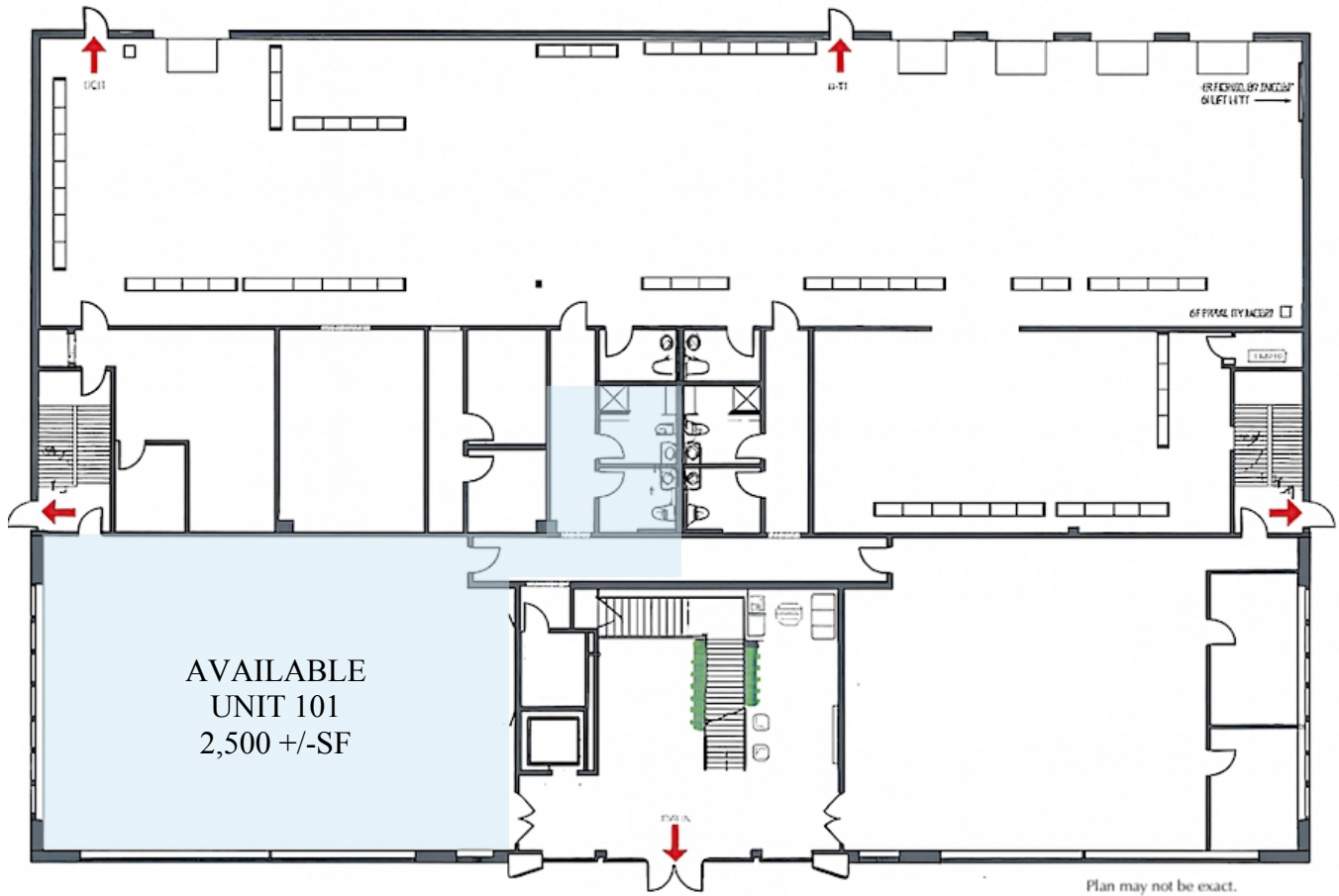
Edward@CarboneRE.com

CarboneRE.com

CARBONE Commercial Real Estate, Inc.

All information furnished is from sources deemed reliable, but no warranty or representation is made as to the accuracy thereof, and the same is presented subject to errors, omissions, change of price, rental or other conditions, prior sale or lease, or withdrawal without notice. Copyright © 2025 Carbone Commercial Real Estate, Inc., agent of the Owner/Lessor.

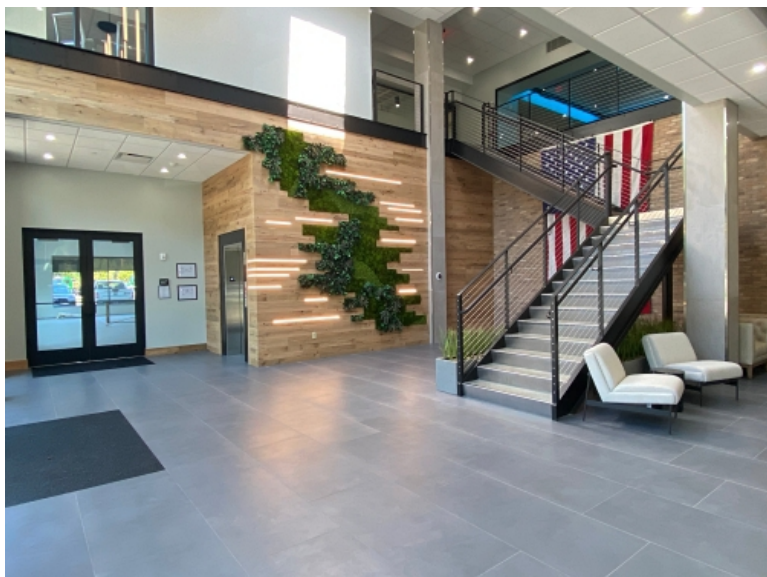
760 MAIN STREET, WILMINGTON, MA



781.935.5444
CarboneRE.com

CARBONE Commercial Real Estate, Inc.

760 MAIN STREET, WILMINGTON, MA



781.935.5444
CarboneRE.com

CARBONE Commercial Real Estate, Inc.