

# 911 Main Street, Woburn, MA



**13,476 +/- SF  
COMMERCIAL BUILDING**

**FOR SALE: \$1,800,000**



## SPECIFICATIONS

1 <sup>st</sup> Floor	4,492+/- SF
2 <sup>nd</sup> Floor	4,492+/- SF
Basement Finished	2,469+/- SF
Basement Unfinished	2,023+/- SF
Age:	1997 per assessor
Lot Size:	0.32 +/- acres
Lot Size:	13,841 +/- SF
Parking Spaces:	18 +/- spaces
Corner Lot:	Yes
Zone:	BH Business Highway
Exterior:	Brick
Construction:	Block and Steel
Electric Service:	400 amp
Water & Sewer:	Municipal
Sprinklers:	Yes
Loading Dock:	Two (2)
Drive-in doors:	One (1)
Ceiling Height:	10 +/- feet
Map Block Lot:	13-6-39
Assessment:	\$756,500
RE Tax 2020:	\$17,550.80
Main Street Frontage	120+/- feet
E.Nichols Street Frontage	118+/- feet

## CARBONE Commercial Real Estate, Inc.

Your Professional Commercial-Investment Real Estate Source

Contact: **Edward Carbone 781-935-5444** Edward@CarboneRE.com www.CarboneRE.com

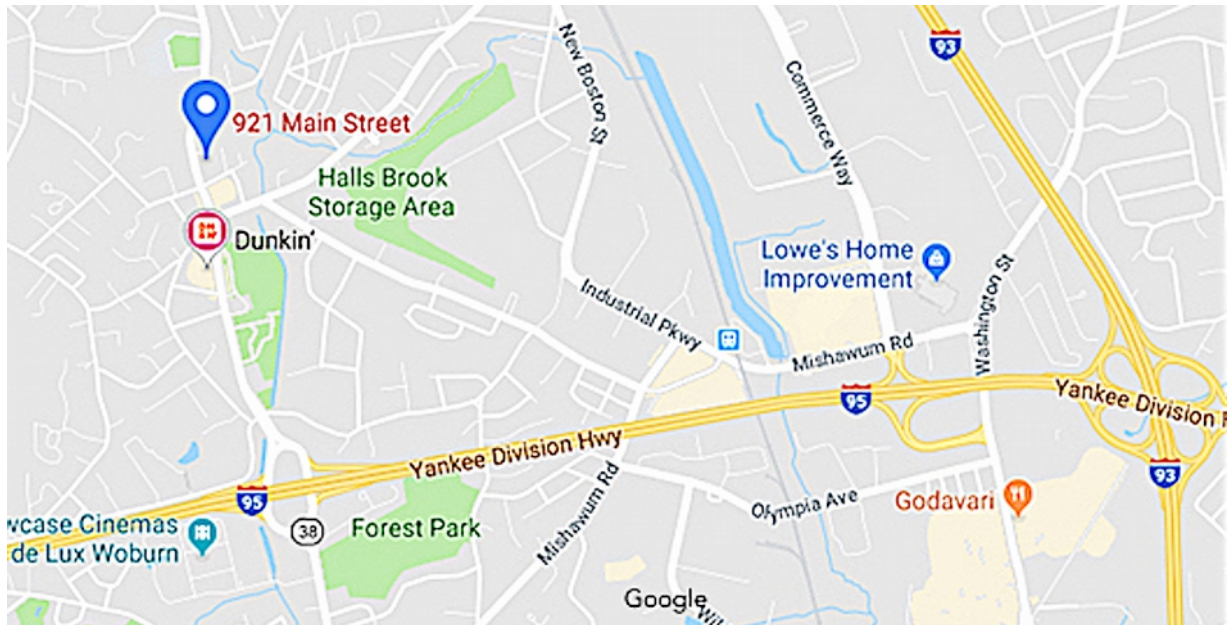
All information furnished is from sources deemed reliable, but no warranty or representation is made as to the accuracy thereof, and the same is presented subject to errors, omissions, change of price, rental or other conditions, prior sale or lease, or withdrawal without notice, Copyright 2020 Carbone Commercial Real Estate, Inc., agent of the Seller.



# 911 Main Street, Woburn, MA



## LOCATION



---

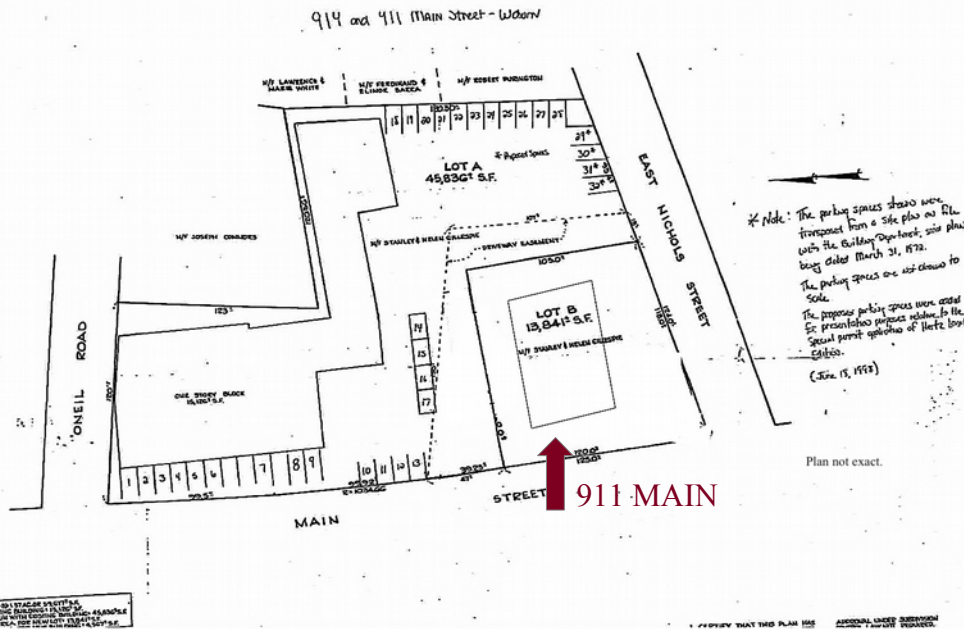
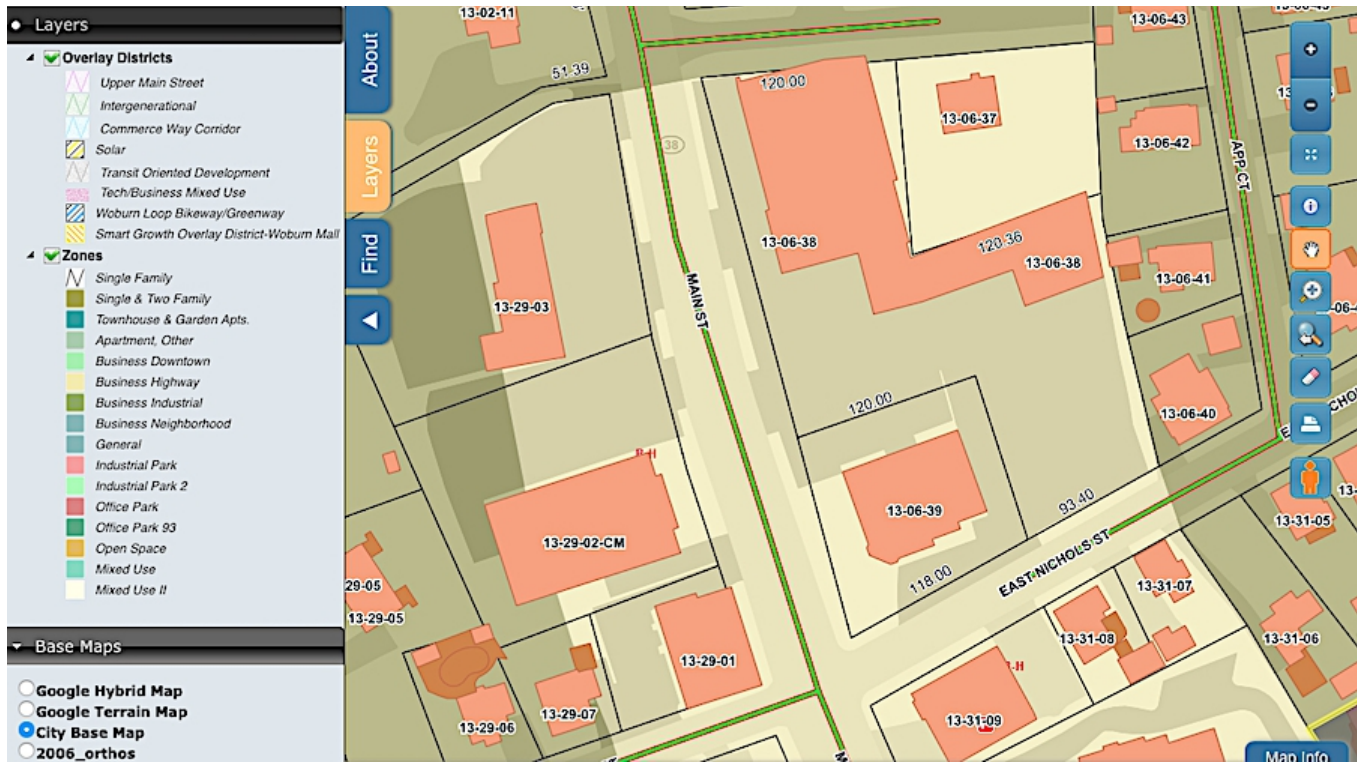
**CARBONE Commercial Real Estate, Inc.**

Your Professional Commercial-Investment Real Estate Source

Contact: Edward Carbone 781-935-5444 Edward@CarboneRE.com www.CarboneRE.com

# 911 Main Street, Woburn, MA

## ZONING (Business-Highway: B-H)



## CARBONE Commercial Real Estate, Inc.

Your Professional Commercial-Investment Real Estate Source

Contact: Edward Carbone 781-935-5444 Edward@CarboneRE.com www.CarboneRE.com